

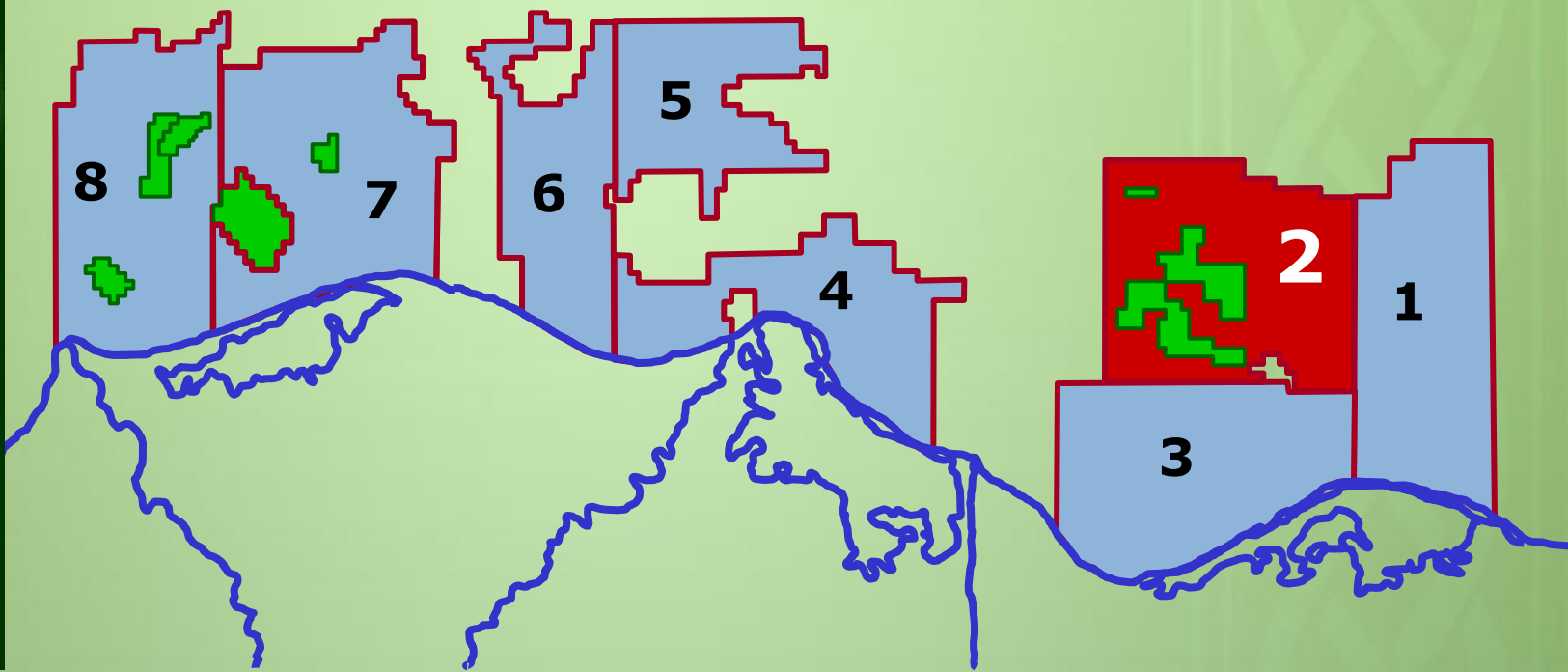


Ministry of Petroleum
and Mineral Resources



Block 2

East Port Said Offshore



BID 2015



Block Summary

Location:

East Port Said Offshore Block is located at approximately 98 km to the WNW of El Arish City and some 72 km to the northeast of Port Said City. The southern boundary of the block is situated some 32 km to the north of the Mediterranean shoreline with its northern boundary extending for additional 45 km. The block is situated in an area with well-established infrastructure for gas-condensate production/transportation.

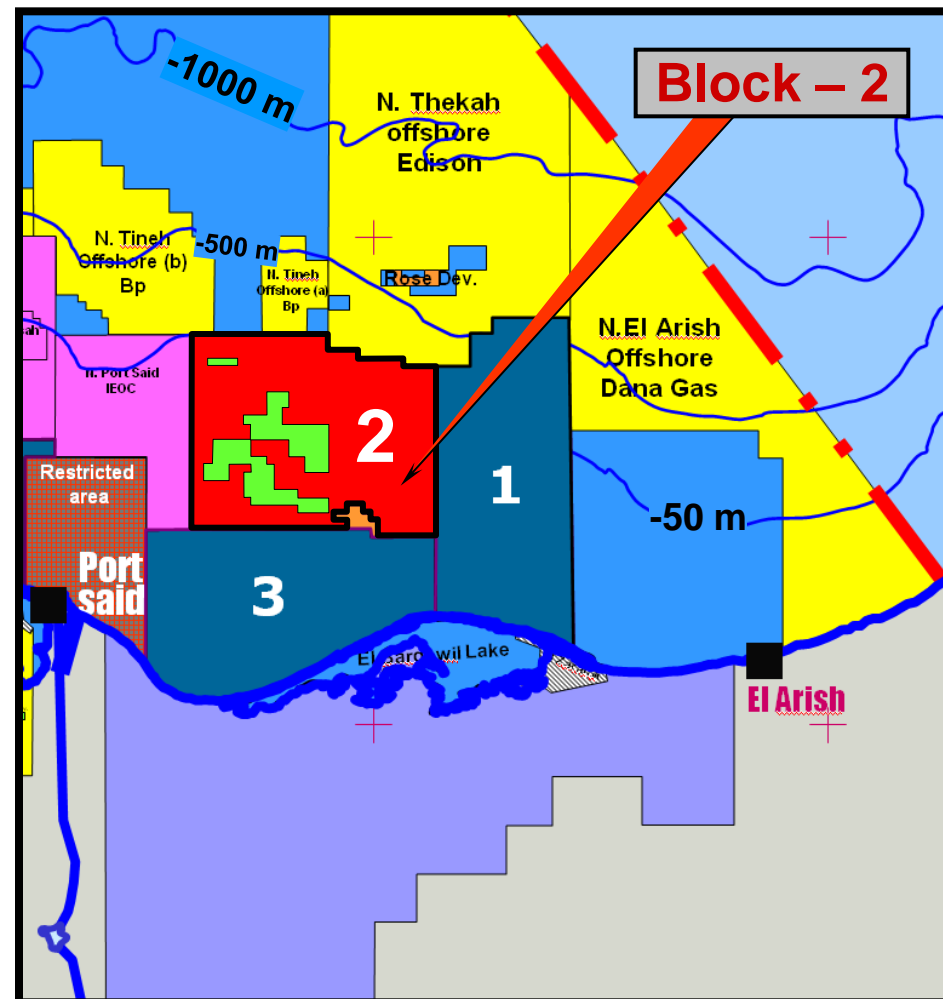
Total Area: 1855 Km²

Water Depth: Ranges from 20 m to 350 m

Previous Concessionaire: BG & IEOC

Nearby Fields & Discoveries:

East Port Said Offshore Block lies to the east of numerous fields of the Tamsah-Akhen Trend with gas-condensate production, mainly from Miocene sandstone reservoirs. The block encompasses three development lease areas (Tao, Kamose & North Bardawil) of the Tao, Kamose and Zaraf gas-condensate fields respectively.





EGAS



Ministry of Petroleum and Mineral Resources

Block Coordinates & Drilled Wells

Block 2: East Port Said Offshore

Block-2 East Port Said Offshore

NO.	Lat.	Long.
1	31° 44' 00"	33° 09' 00"
2	31° 23' 00"	33° 09' 00"
3	31° 23' 00"	33° 01' 00"
4	31° 25' 00"	33° 01' 00"
5	31° 25' 00"	33° 00' 00"
6	31° 26' 00"	33° 00' 00"
7	31° 26' 00"	32° 59' 00"
8	31° 27' 00"	32° 59' 00"
9	31° 27' 00"	32° 57' 00"
10	31° 26' 00"	32° 57' 00"
11	31° 26' 00"	32° 55' 00"
12	31° 25' 00"	32° 55' 00"
13	31° 25' 00"	32° 57' 00"
14	31° 24' 00"	32° 57' 00"
15	31° 24' 00"	32° 36' 00"
16	31° 48' 00"	32° 36' 00"
17	31° 48' 00"	32° 54' 00"
18	31° 46' 00"	32° 54' 00"
19	31° 46' 00"	32° 58' 00"
20	31° 45' 00"	32° 58' 00"
21	31° 45' 00"	33° 04' 00"
22	31° 44' 00"	33° 04' 00"

Kamose Development Lease

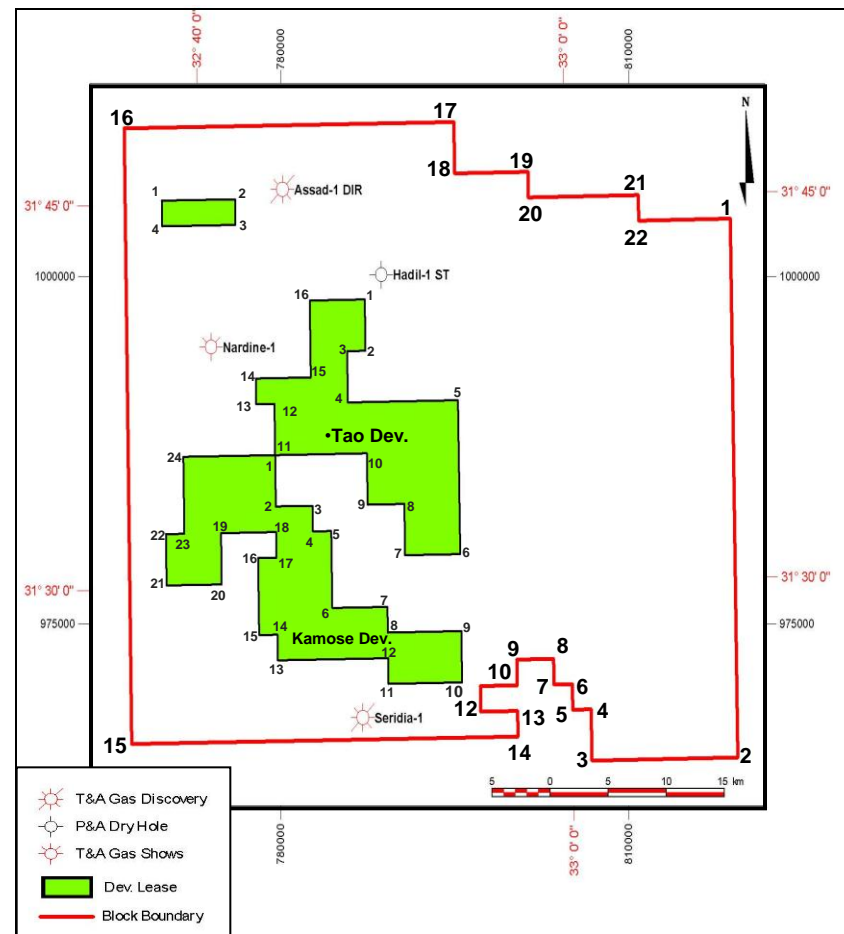
No.	Lat.	Long.
1	31° 35' 00"	32° 44' 00"
2	31° 33' 00"	32° 44' 00"
3	31° 33' 00"	32° 46' 00"
4	31° 32' 00"	32° 46' 00"
5	31° 32' 00"	32° 47' 00"
6	31° 29' 00"	32° 47' 00"
7	31° 29' 00"	32° 50' 00"
8	31° 28' 00"	32° 50' 00"
9	31° 28' 00"	32° 54' 00"
10	31° 26' 00"	32° 54' 00"
11	31° 26' 00"	32° 50' 00"
12	31° 27' 00"	32° 50' 00"
13	31° 27' 00"	32° 44' 00"
14	31° 28' 00"	32° 44' 00"
15	31° 28' 00"	32° 43' 00"
16	31° 31' 00"	32° 43' 00"
17	31° 31' 00"	32° 44' 00"
18	31° 32' 00"	32° 44' 00"
19	31° 32' 00"	32° 41' 00"
20	31° 30' 00"	32° 41' 00"
21	31° 30' 00"	32° 38' 00"
22	31° 32' 00"	32° 38' 00"
23	31° 32' 00"	32° 39' 00"
24	31° 35' 00"	32° 39' 00"

Tao Development Lease

No.	Lat.	Long.
1	31° 41' 00"	32° 49' 00"
2	31° 39' 00"	32° 49' 00"
3	31° 39' 00"	32° 48' 00"
4	31° 37' 00"	32° 48' 00"
5	31° 37' 00"	32° 54' 00"
6	31° 31' 00"	32° 54' 00"
7	31° 31' 00"	32° 51' 00"
8	31° 33' 00"	32° 51' 00"
9	31° 33' 00"	32° 49' 00"
10	31° 35' 00"	32° 49' 00"
11	31° 35' 00"	32° 44' 00"
12	31° 37' 00"	32° 44' 00"
13	31° 37' 00"	32° 43' 00"
14	31° 38' 00"	32° 43' 00"
15	31° 38' 00"	32° 46' 00"
16	31° 41' 00"	32° 46' 00"

North Bardawil Development Lease

No.	Lat.	Long.
1	31° 45' 00"	32° 38' 00"
2	31° 45' 00"	32° 42' 00"
3	31° 44' 00"	32° 42' 00"
4	31° 44' 00"	32° 38' 00"



Well Name/ Company	Spud Date/ Compl. Date	TD/ FM. @ TD	Lat./ Long	Status
Assad-1 DIR IEOC	05-Oct-02 08-Nov-02	2445M K. El Sheikh (Pliocene)	31° 45' 30.665" 32° 44' 35.886"	T&A Gas Discovery
Hadil-1 ST IEOC	25-Jul-05 29-Aug-05	1901M K. El Sheikh (Pliocene)	31° 42' 6.515" 32° 49' 55.413"	P&A (Pliocene Gas Samples)
Nardine-1 IEOC	16-Nov-08 26-Jan-09	3950 M Sidi Salem (Miocene)	31° 39' 25.16" 32° 40' 35.78"	T&A Gas Shows
Seridia-1 IEOC	12-Apr-10 5-May-10	1510 M K. El Sheikh (Pliocene)	31° 24' 51.92" 32° 48' 35.57"	T&A Gas Discovery

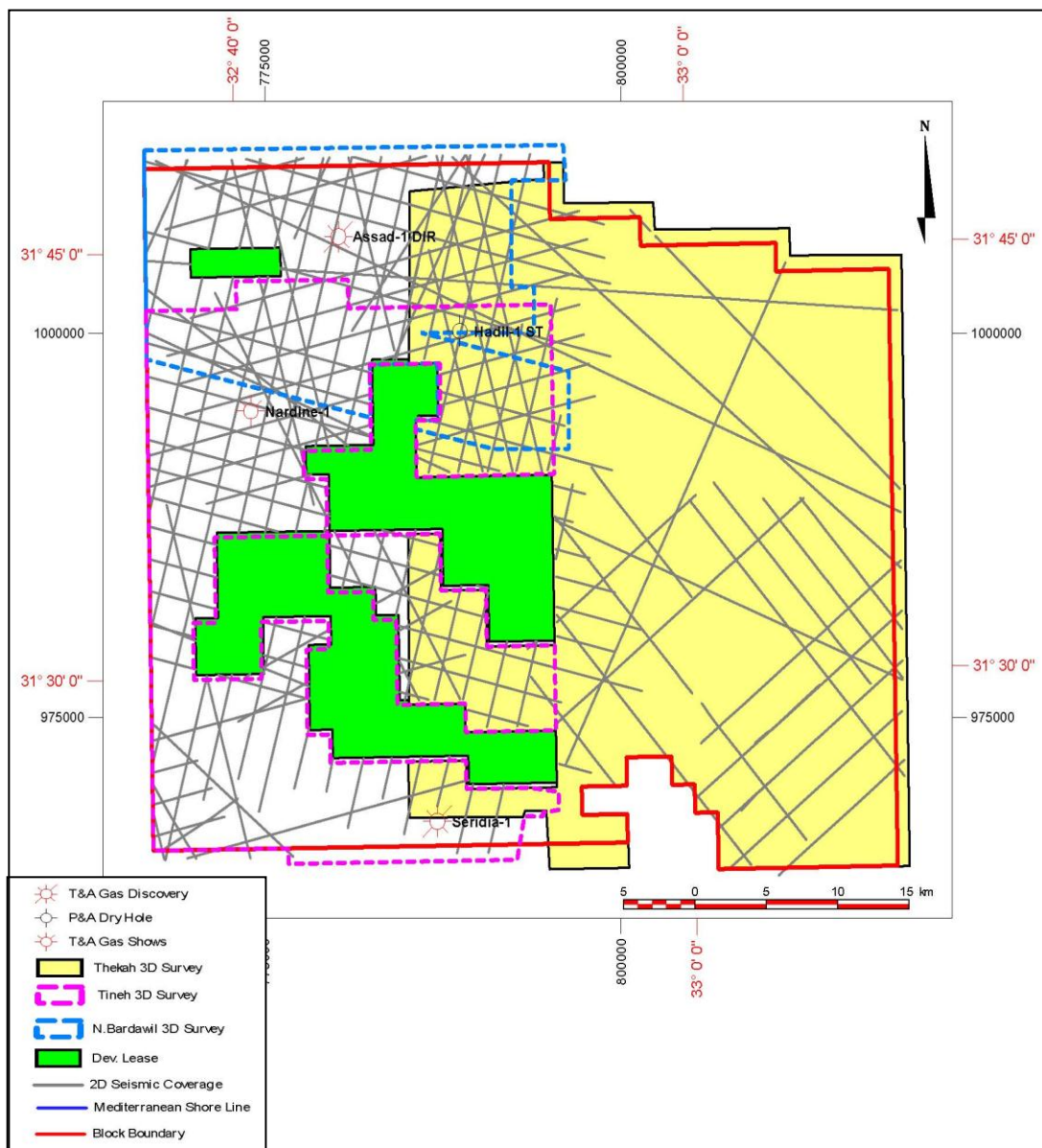


2D & 3D Seismic Coverage



2D Seismic Surveys (Segy Standard Format)		
Survey Name	Line-Km	No. of Seismic Lines
9205	69	6
9606	147	12
NS	327	15
S_Lines	86	8
BP_ND 1&5	256	8
TGS & Veritas	49	3
NS 94	668	30
NSI81	251	17
Total	1853	99

3D Seismic Data (Segy Standard Format)	
Survey Name	Area (Sq. Km)
Thekah	1272
Tineh	717
N.Bardawil	433



Block – 2 Prospectivity Examples

EGAS

Block 2: East Port Said Offshore

East Port Said Offshore Block is located in the Eastern Nile Delta Offshore area, at the southeastern end of the NW-SE Temsah-Akhen Trend of gas-condensate fields. The fields of this trend comprise stratigraphic/structural combination traps involving Pliocene and Miocene sandstone reservoirs aligned along the NW-SE Misfaq-Bardawil Temsah fault. The three development leases (Tao, Kamose & North Bardawil) situated within the perimeter of the block, constitute the southeastern extension of the Temsah Trend with dry gas production from clastic sandstone reservoirs of Plio-Pleistocene age. In addition to its proximity to the numerous gas-condensate fields of the Temsah Trend, the block is also situated to the north of the Tineh-1 Oligocene oil discovery.

In addition to its location in the above mentioned setting, East Port Said Offshore contains two gas discoveries (Assad-1 Dir. in the northern part of the block and Seridia-1 in the southern part) in the sandstones of the Plio-Pleistocene section. The Assad discovery was developed and depleted, while the Seridia discovery is yet to be appraised/developed.

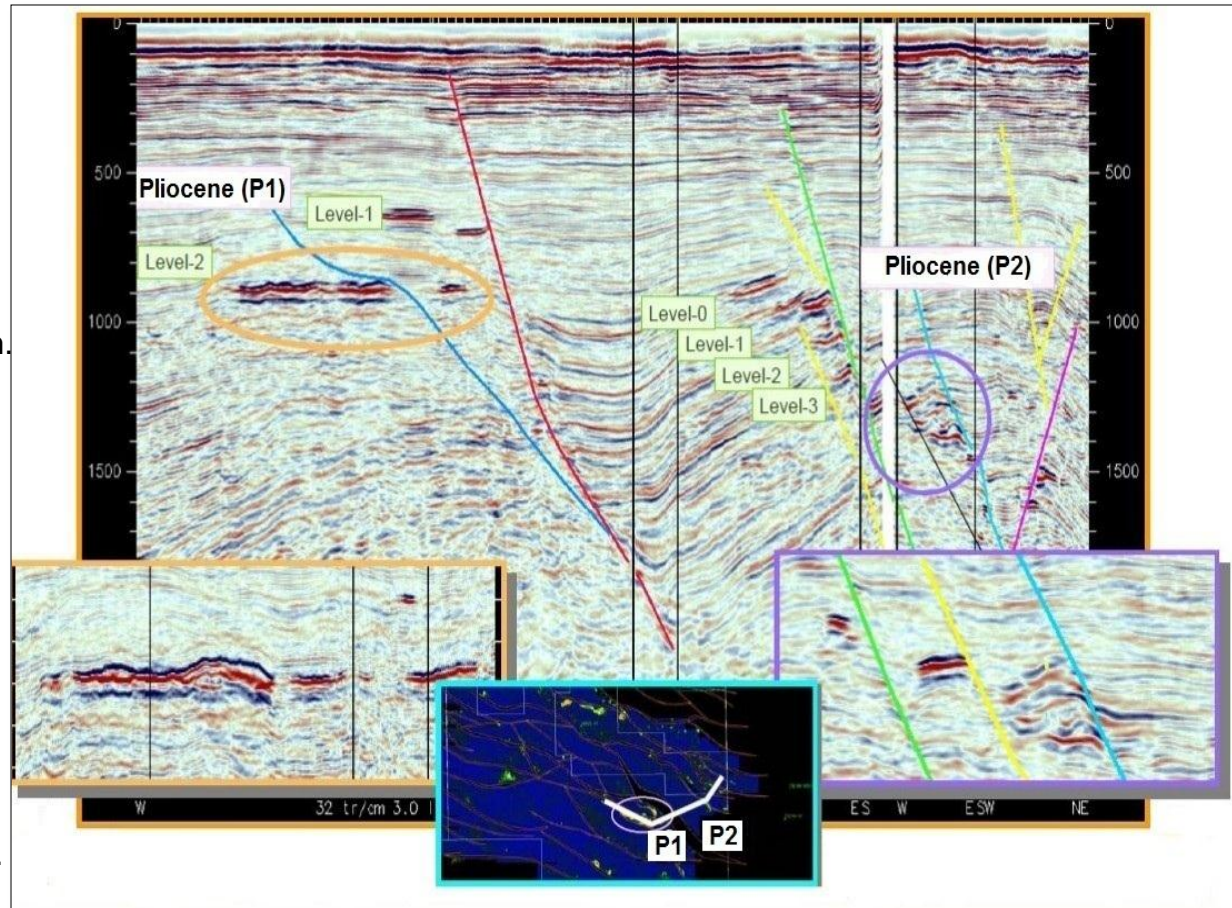
Pliocene Play Concept:

Source: Massive shales of Kafr El Sheikh Fm.

Reservoir: Mainly represented by massive to laminated sands, lying up dip within a growth faulted block of Kafr El Sheikh Fm.

Seal: Massive shales of deep marine deposits provide the top and lateral seal for the target reservoirs.

Trapping: Combined structural/stratigraphic traps formed by channel fill features within roll over anticlinal structures created/associated to listric growth faults.



Messinian Play Concept:

Source: The shales of the Oligocene Tineh fm and the Early Miocene Qantara fm.

Reservoir: Sandstones of the Upper Miocene Tortonian Wakar formation. These sandstones are anticipated to rich gas potential.

Seal: Top seal is provided by the overlying Messinian salt, while lateral seal is essentially by intra-formational shales.

Trapping: Anticlinal feature with 4-way dip closure.

