

*Arab Republic of Egypt*

*Ministry Petroleum and Mineral Resources*

**South Valley Egyptian Petroleum Holding Company  
(Ganope)**

**Offshore Red Sea International Bid Round /2019  
For Oil and Gas Exploration and Exploitation**

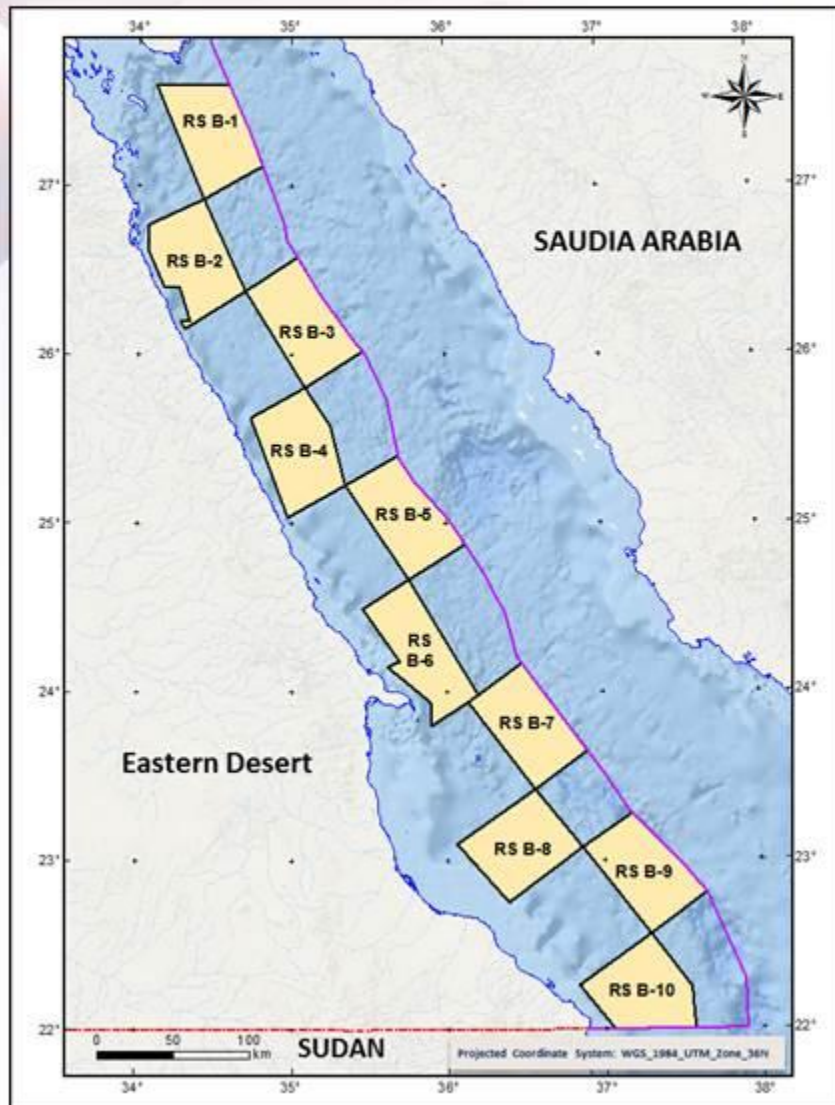


**GANOPE**

SOUTH VALLEY EGYPTIAN PETROLEUM HOLDING COMPANY



## Offshore Red Sea International Bid Round /2019 Blocks



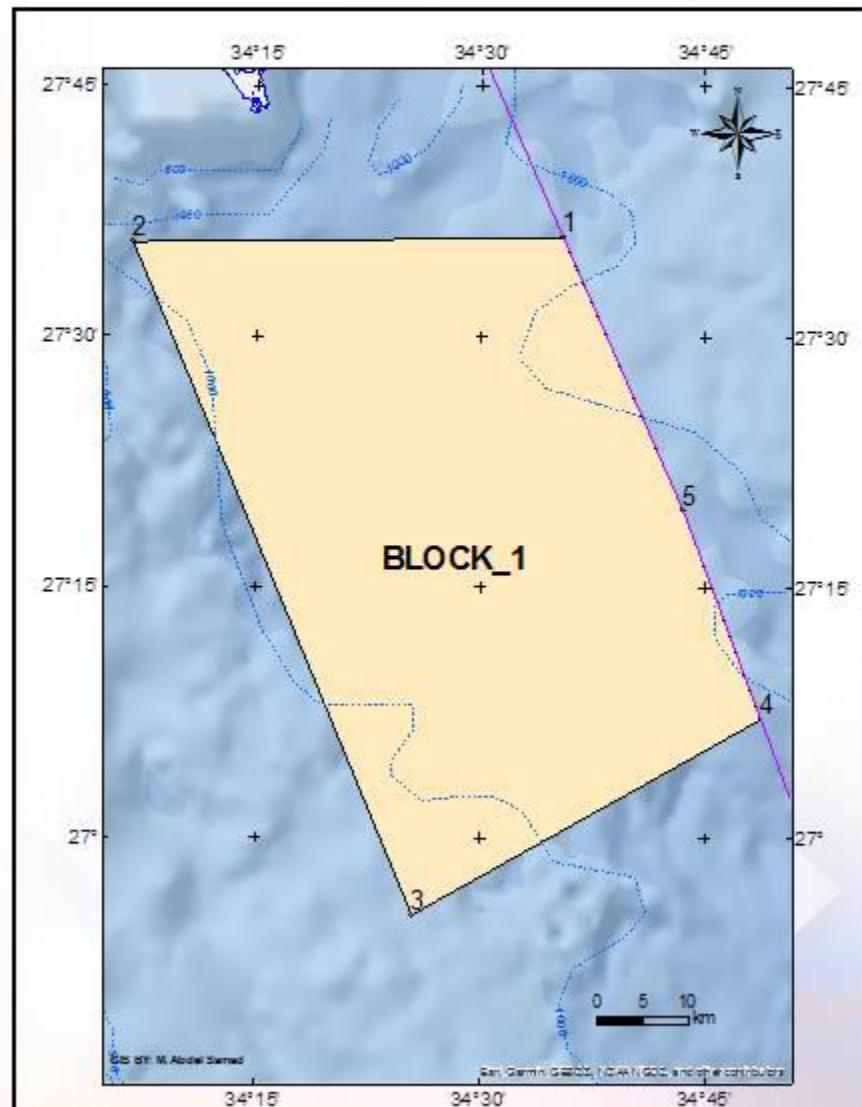
No.	Name	Area in km <sup>2</sup>
1	Red Sea Block 1	3057
2	Red Sea Block 2	3010
3	Red Sea Block 3	3097
4	Red Sea Block 4	3084
5	Red Sea Block 5	3025
6	Red Sea Block 6	3050
7	Red Sea Block 7	3090
8	Red Sea Block 8	3060
9	Red Sea Block 9	3067
10	Red Sea Block 10	3039

# Red Sea Block 1

Area=3057 km<sup>2</sup>

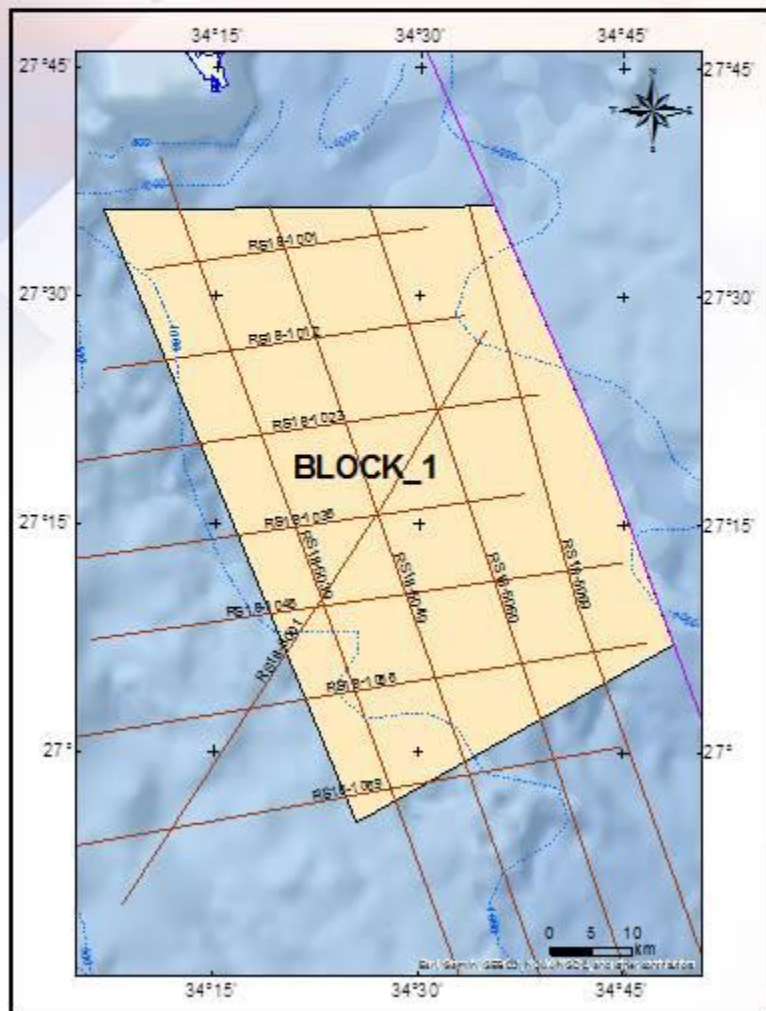
Point	Latitude	Longitude
1	27° 35' 58.000" N	34° 35' 27.800" E
2	27° 35' 57.397" N	34° 06' 41.816" E
3	26° 55' 24.00" N	34° 25' 29.000" E
4	27° 07' 10.000" N	34° 48' 44.000" E
5	27° 19' 40.020" N	34° 43' 31.598" E

Projected Coordinate System:  
WGS 1984\_UTM Zone 36N





## New seismic DATA (RS18)

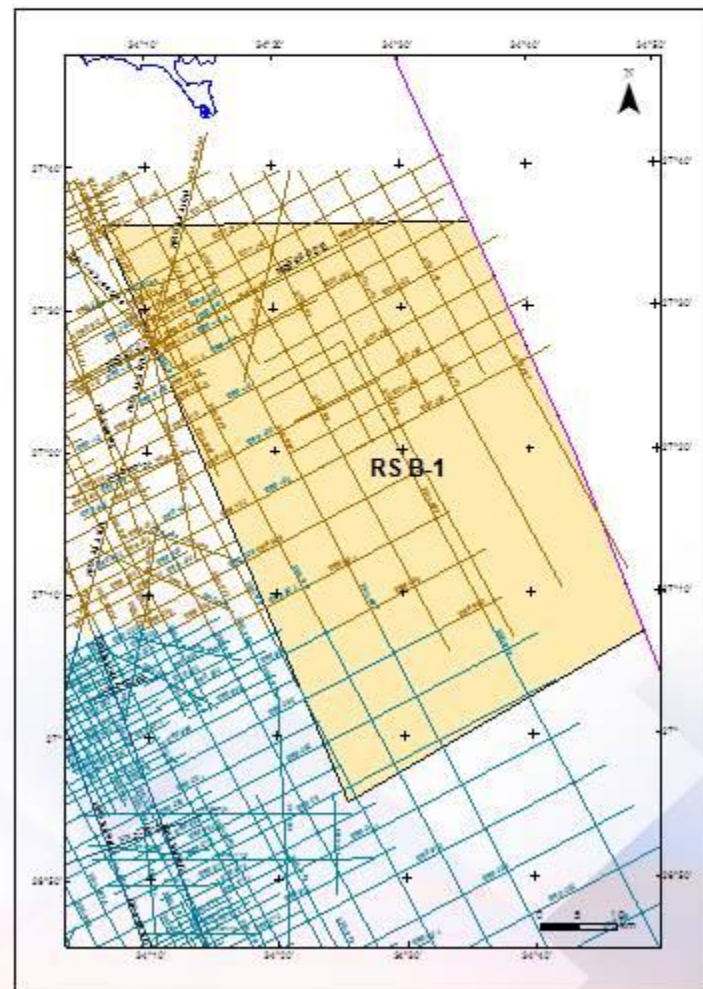


**Block 1**

**Available Data**



## Re-Processing Legacy 2D Seismic Lines

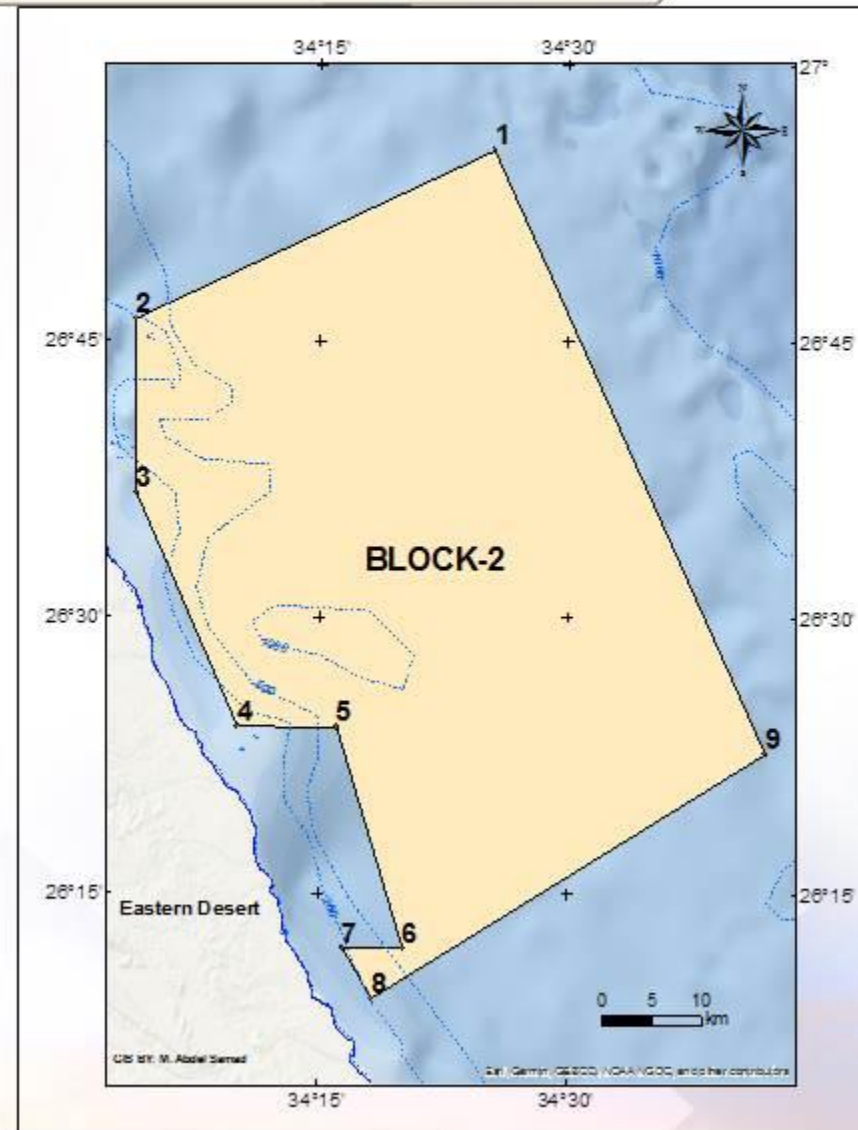


# Red Sea Block 2

Area=3010 km<sup>2</sup>

Point	Latitude	Longitude
1	26° 55' 24.000" N	34° 25' 29.000" E
2	26° 46' 13.000" N	34° 03' 54.000" E
3	26° 36' 45.000" N	34° 03' 50.000" E
4	26° 24' 03.000" N	34° 10' 06.000" E
5	26° 24' 02.000" N	34° 16' 05.000" E
6	26° 12' 01.000" N	34° 20' 07.000" E
7	26° 12' 02.000" N	34° 16' 30.000" E
8	26° 09' 18.000" N	34° 18' 15.000" E
9	26° 22' 38.000" N	34° 41' 58.000" E

Projected Coordinate System:  
WGS 1984\_UTM Zone 36N





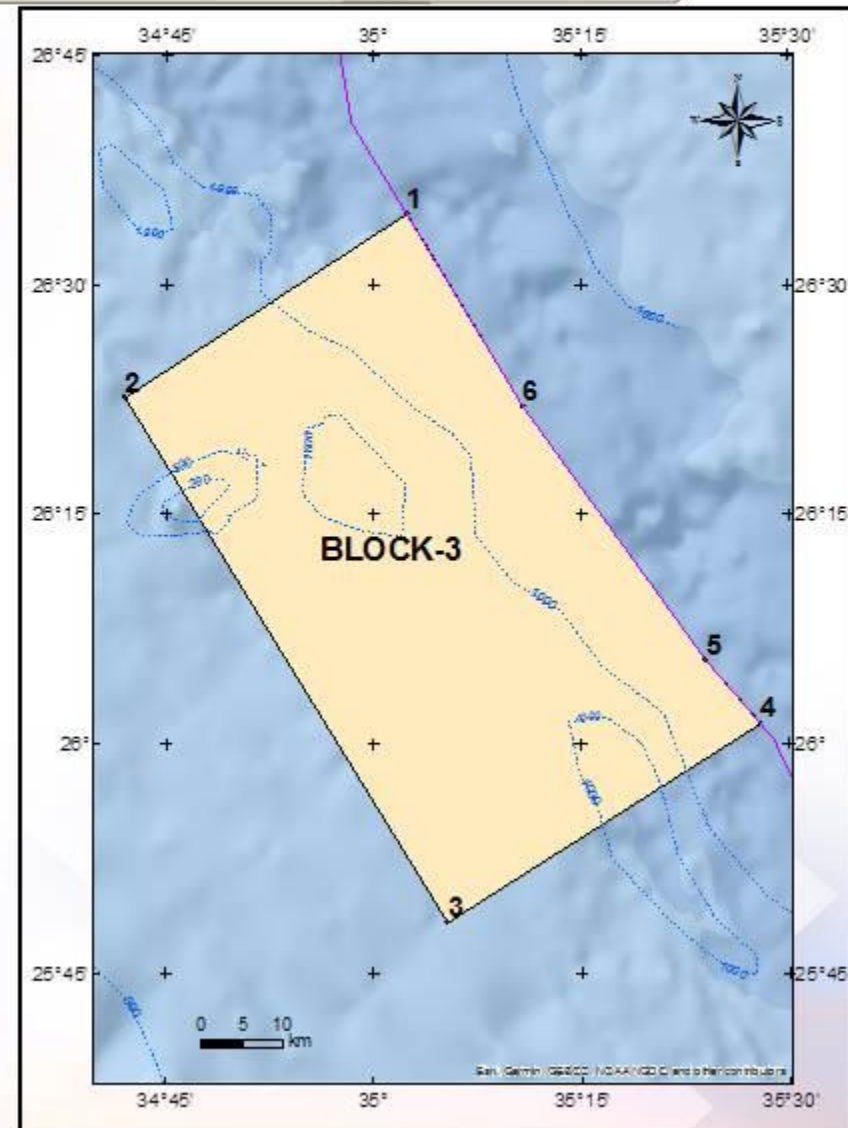


# Red Sea Block 3

**Area=3097 km<sup>2</sup>**

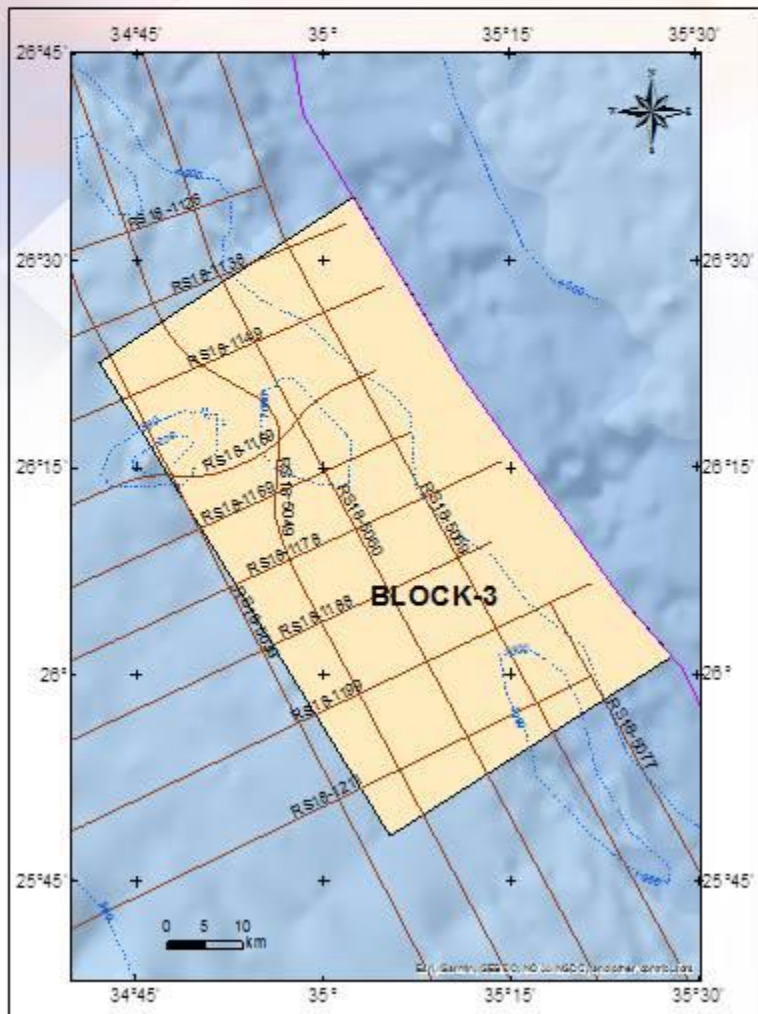
Point	Latitude	Longitude
1	26° 34' 39.000" N	35° 02' 22.000" E
2	26° 22' 38.000" N	34° 41' 58.000" E
3	25° 48' 21.000" N	35° 05' 18.000" E
4	26° 01' 17.979" N	35° 27' 54.963" E
5	26° 05' 26.000" N	35° 24' 00.000" E
6	26° 22' 03.900" N	35° 10' 48.000" E

Projected Coordinate System:  
WGS 1984\_UTM Zone 36N



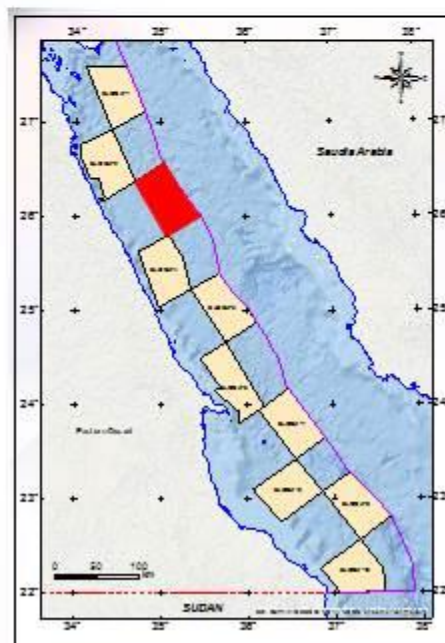


## New seismic DATA (RS18)

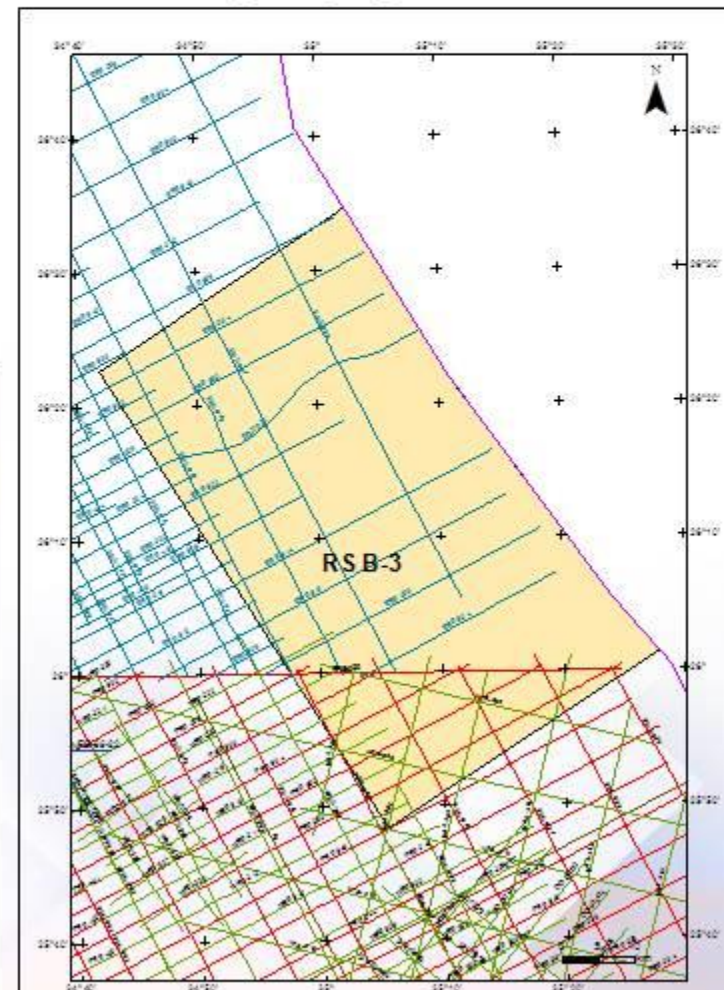


**Block 3**

**Available Data**



## Re-Processing Legacy 2D Seismic Lines



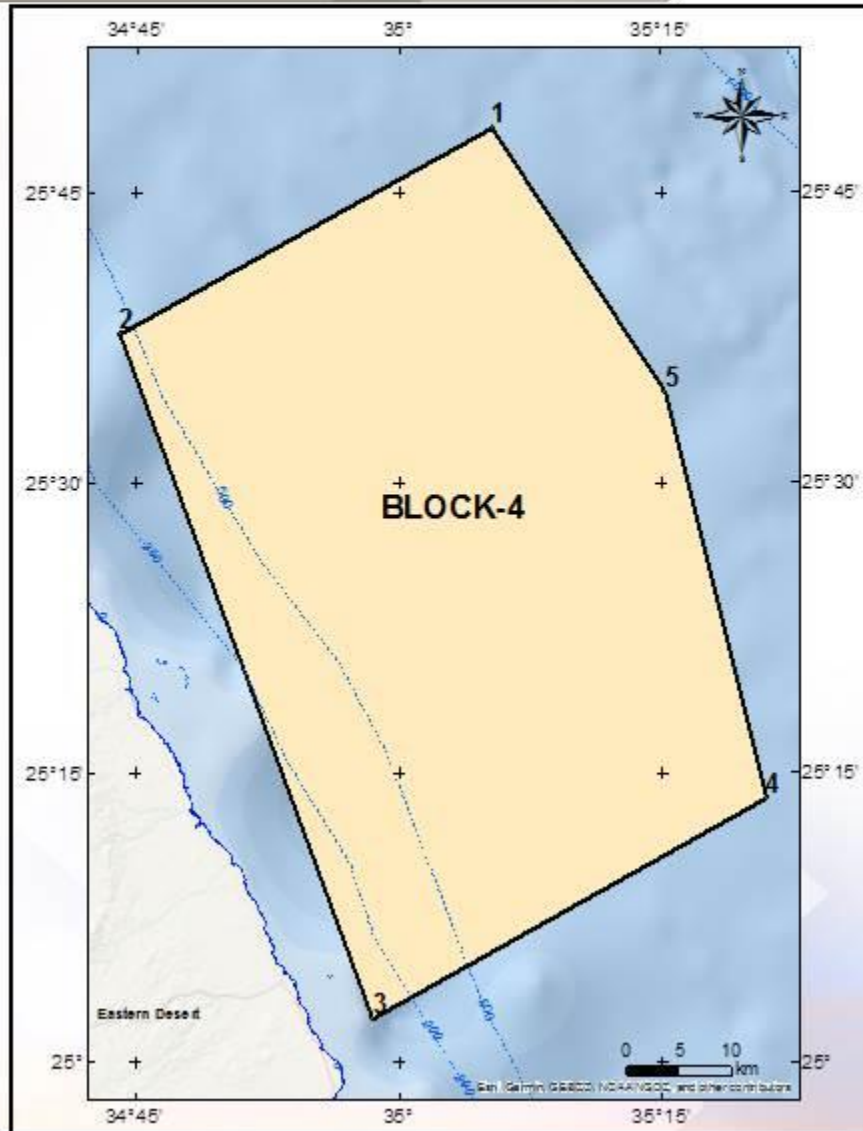


# Red Sea Block 4

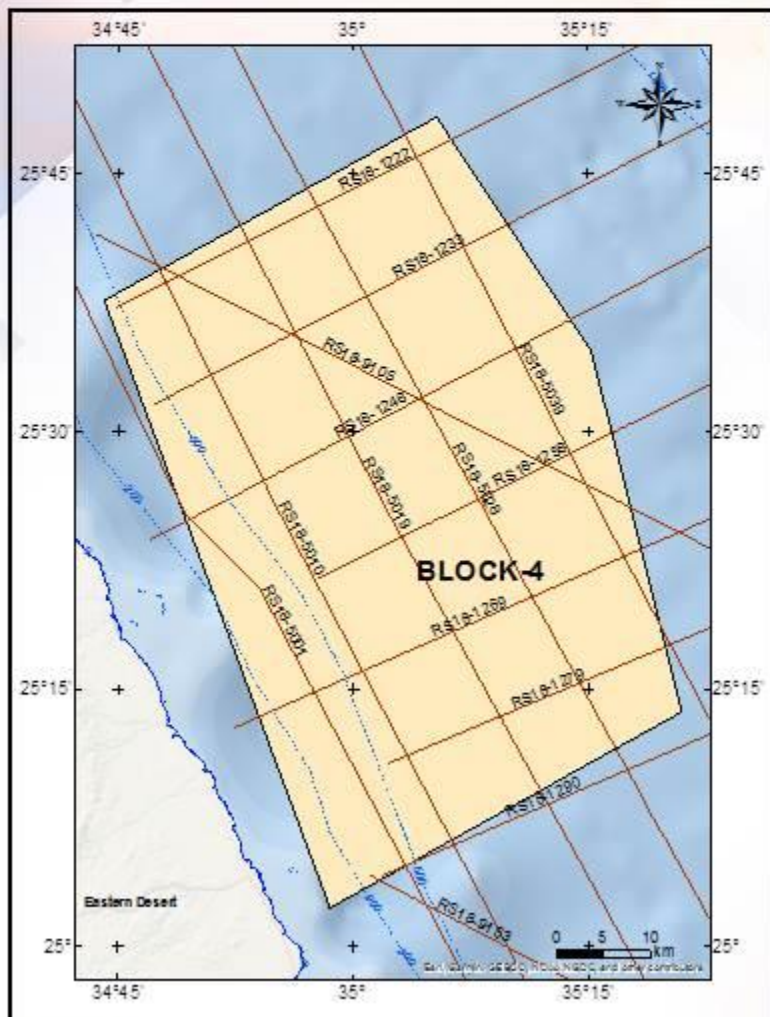
**Area=3084 km<sup>2</sup>**

Point	Latitude	Longitude
1	25° 48' 21.000" N	35° 05' 18.000" E
2	25° 37' 40.000" N	34° 44' 02.000" E
3	25° 02' 17.000" N	34° 58' 30.000" E
4	25° 13' 41.000" N	35° 20' 57.000" E
5	25° 34' 40.000" N	35° 15' 12.000" E

Projected Coordinate System:  
WGS 1984\_UTM Zone 36N

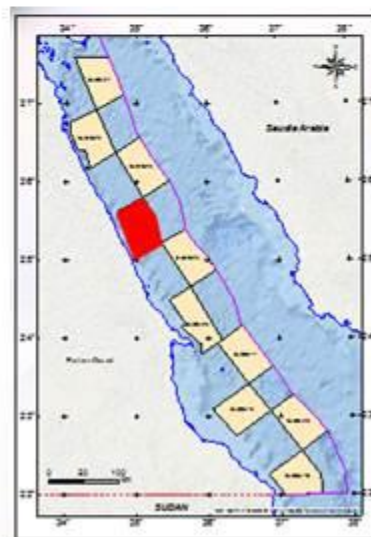


## New seismic DATA (RS18)

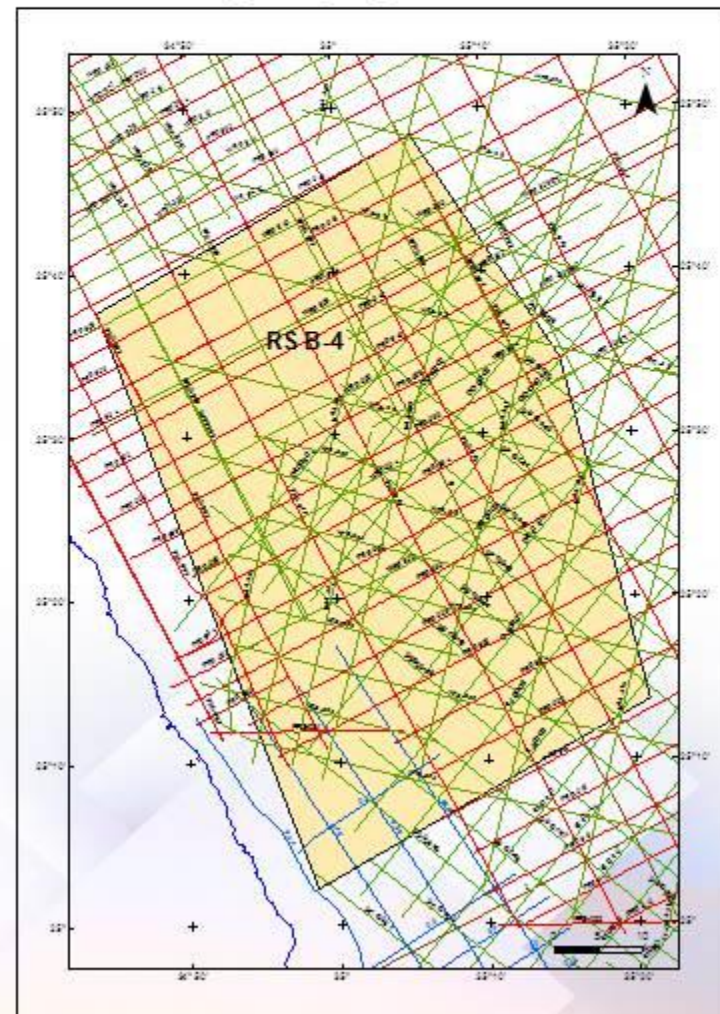


## Block 4

### Available Data



## Re-Processing Legacy 2D Seismic Lines



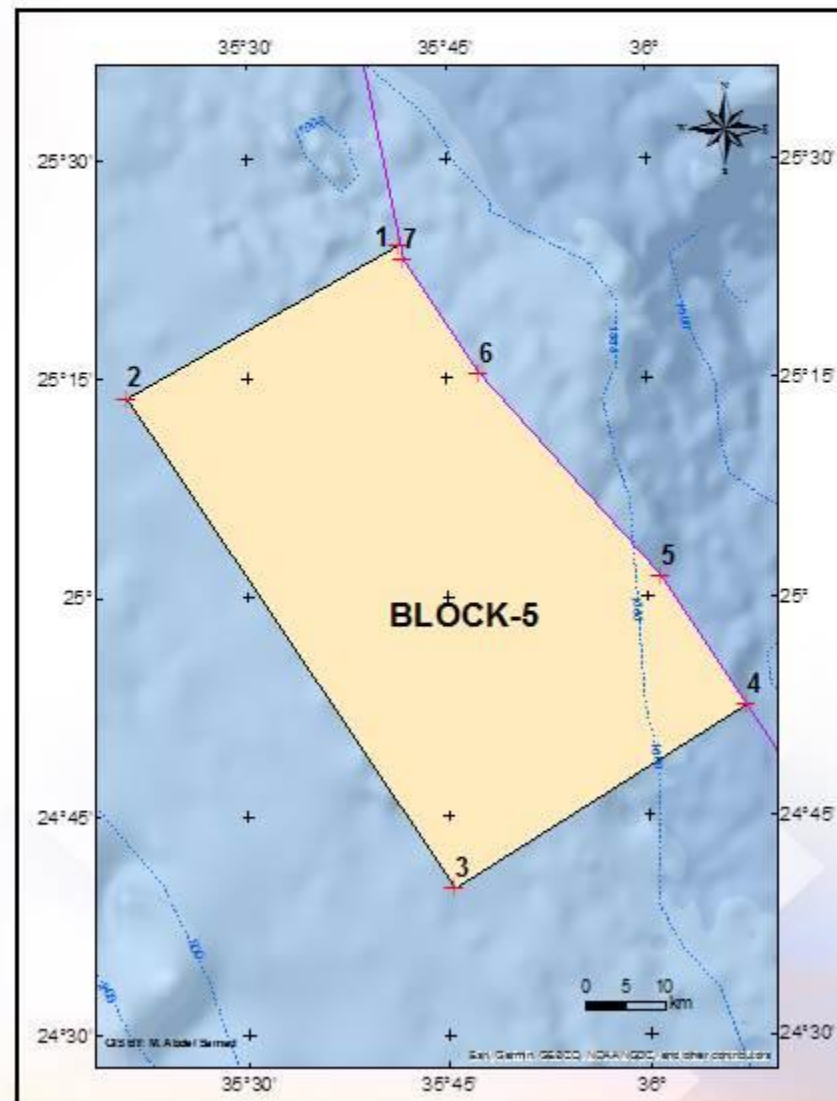


# Red Sea Block 5

Area=3025 km<sup>2</sup>

Point	Latitude	Longitude
1	25° 24' 07.000" N	35° 41' 34.000" E
2	25° 13' 41.000" N	35° 20' 57.000" E
3	24° 40' 04.000" N	35° 45' 26.000" E
4	24° 52' 32.900" N	36° 07' 18.824" E
5	25° 01' 26.000" N	36° 00' 58.000" E
6	25° 15' 20.000" N	35° 47' 25.000" E
7	25° 23' 08.000" N	35° 41' 47.000" E

Projected Coordinate System:  
WGS 1984\_UTM Zone 36N



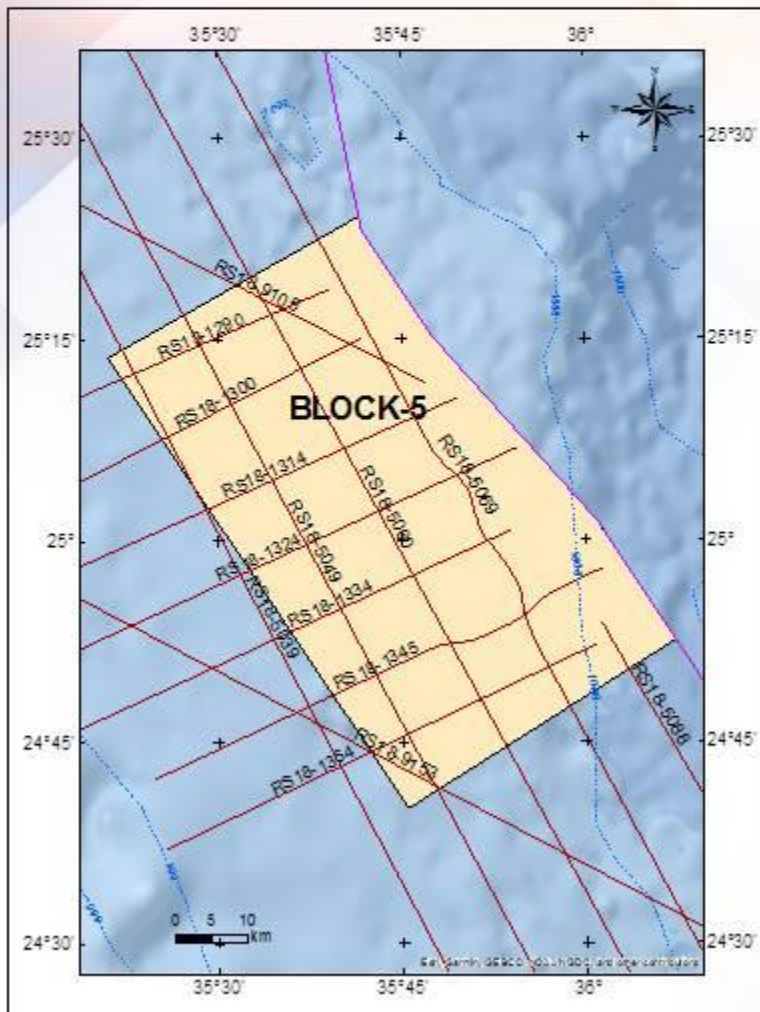


**GANOPE**

SOUTH VALLEY EGYPTIAN PETROLEUM HOLDING COMPANY

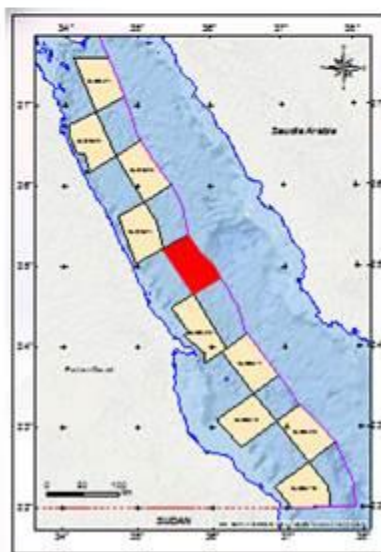


## New seismic DATA (RS18)

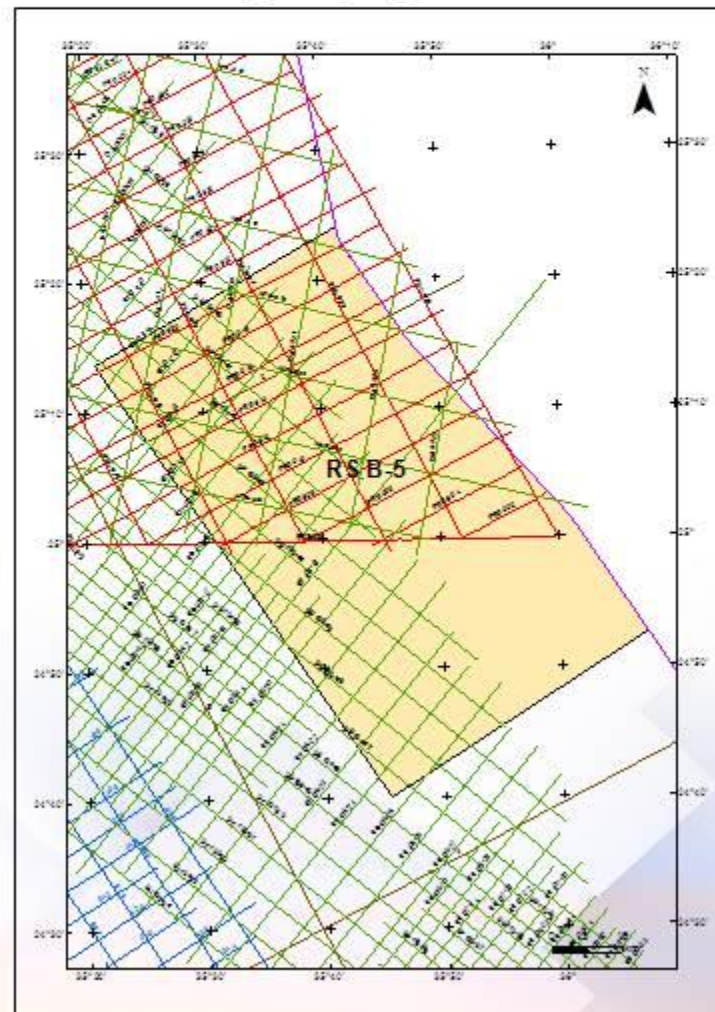


**Block 5**

**Available Data**



## Re-Processing Legacy 2D Seismic Lines



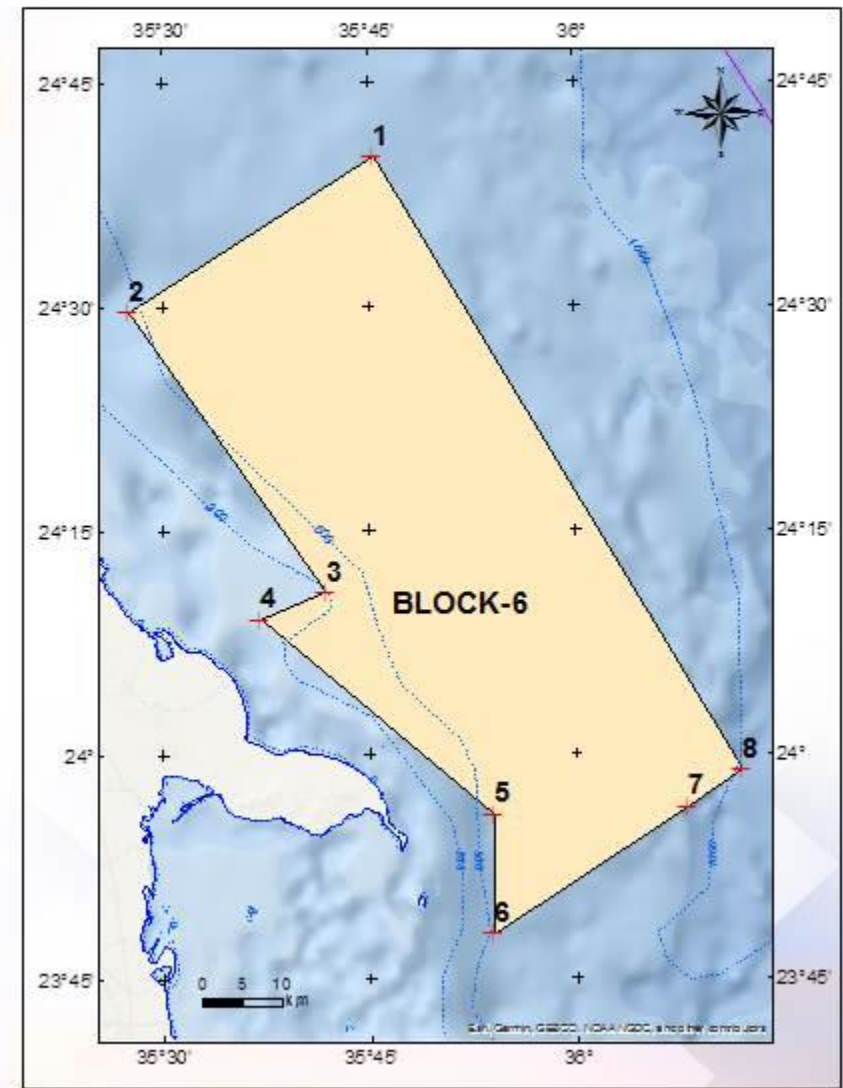


# Red Sea Block 6

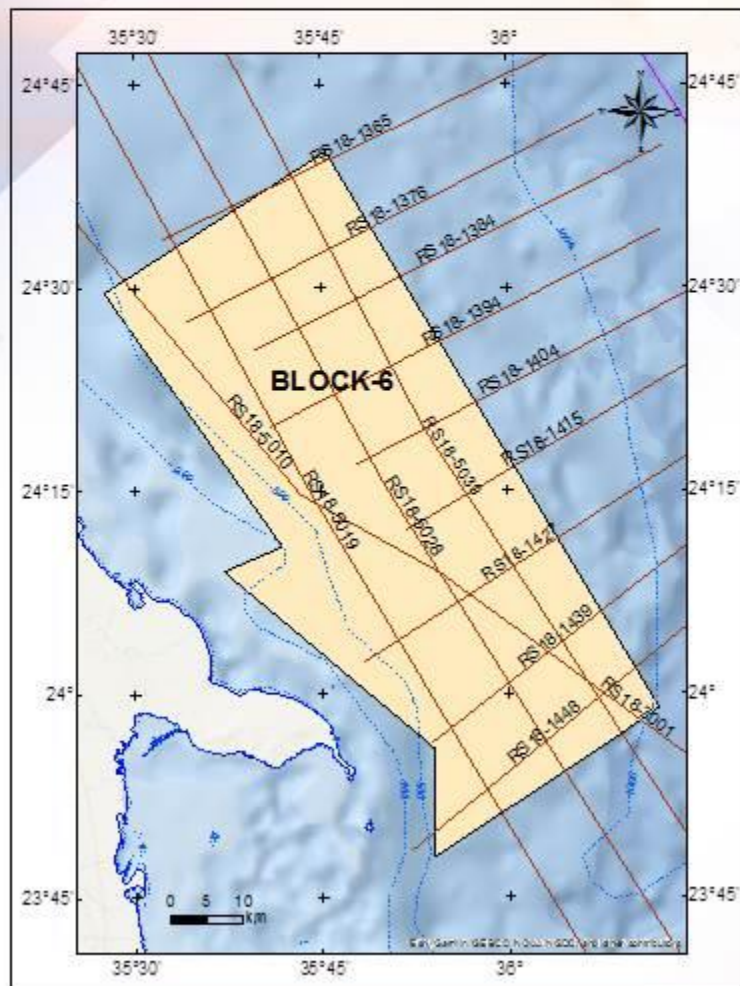
**Area=3050 km<sup>2</sup>**

Point	Latitude	Longitude
1	24° 40' 04.000" N	35° 45' 26.000" E
2	24° 29' 39.000" N	35° 27' 34.000" E
3	24° 10' 56.000" N	35° 41' 50.000" E
4	24° 09' 05.000" N	35° 37' 12.000" E
5	23° 55' 53.000" N	35° 54' 08.000" E
6	23° 48' 00.000" N	35° 54' 00.000" E
7	23° 56' 29.000" N	36° 08' 10.000" E
8	23° 58' 56.000" N	36° 12' 02.000" E

Projected Coordinate System:  
WGS 1984\_UTM Zone 36N

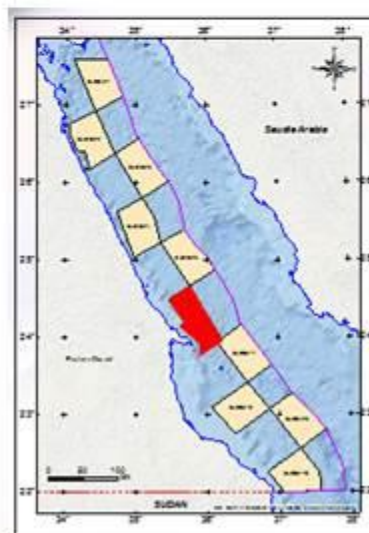


## New seismic DATA (RS18)

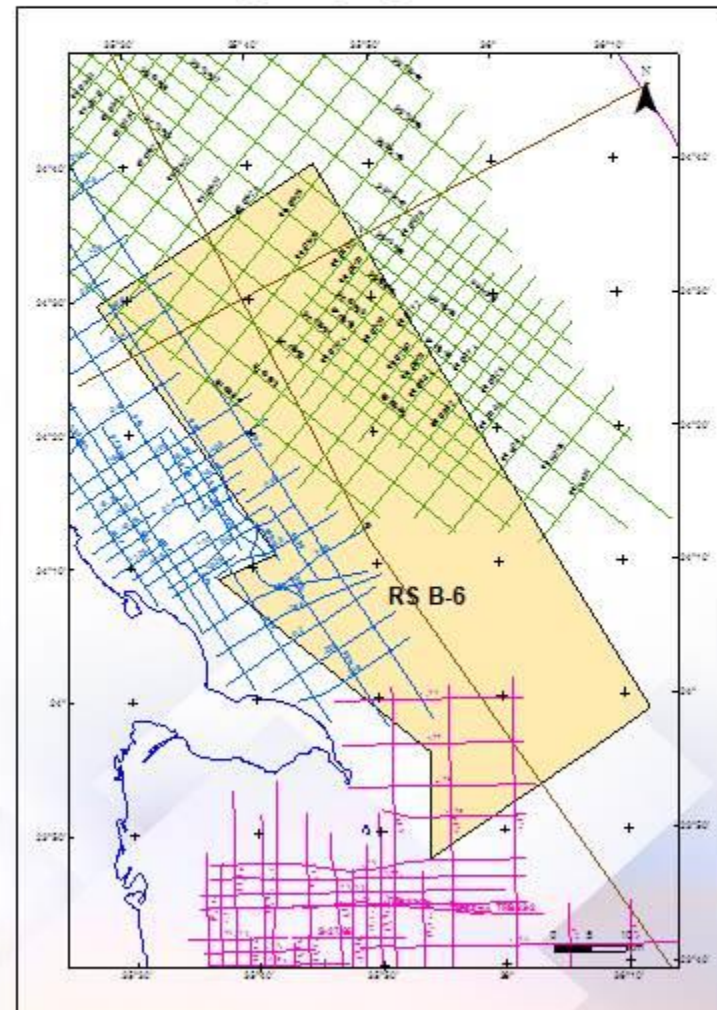


**Block 6**

**Available Data**



## Re-Processing Legacy 2D Seismic Lines



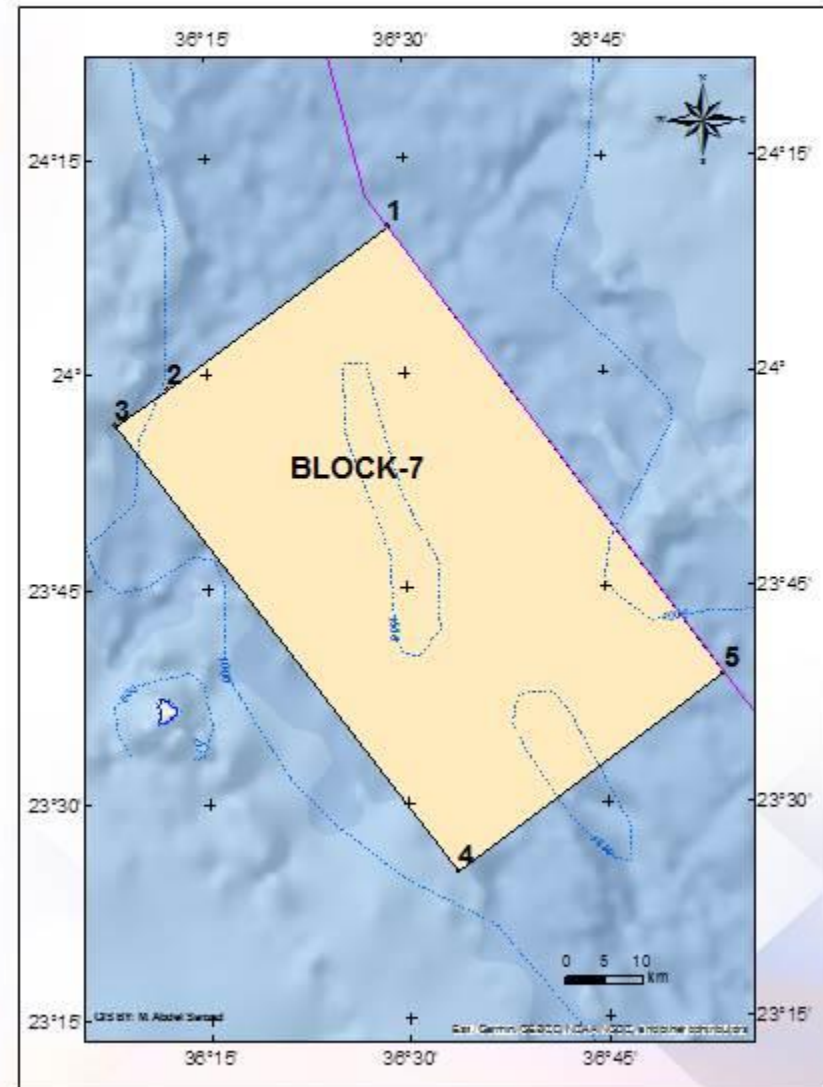


# Red Sea Block 7

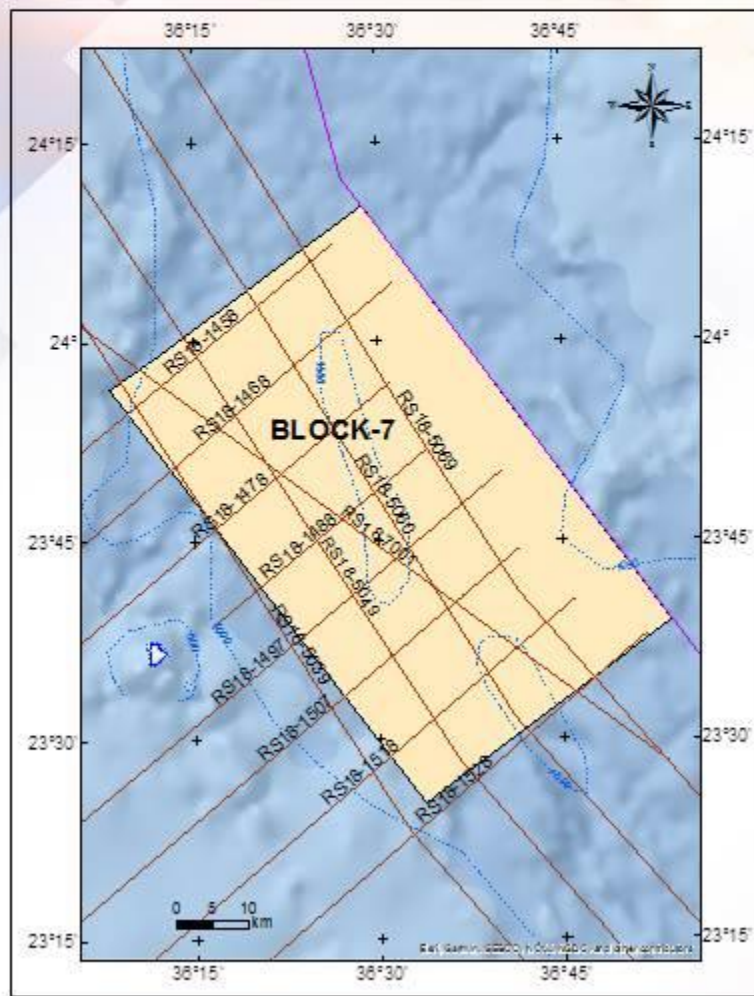
Area=3090 km<sup>2</sup>

Point	Latitude	Longitude
1	24° 10' 12.000" N	36° 28' 49.000" E
2	23° 58' 56.000" N	36° 12' 02.000" E
3	23° 56' 29.000" N	36° 08' 10.000" E
4	23° 25' 15.000" N	36° 33' 41.000" E
5	23° 38' 56.000" N	36° 53' 52.000" E

Projected Coordinate System:  
WGS 1984\_UTM Zone 36N

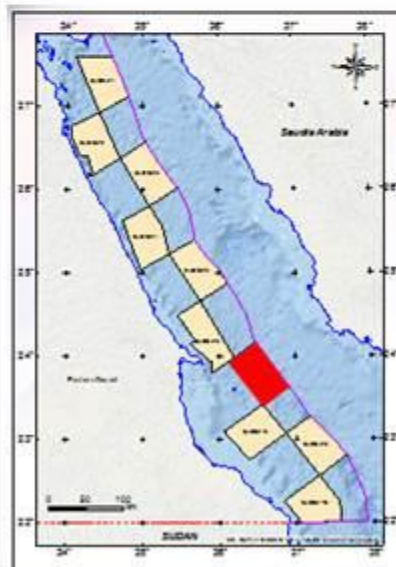


## New seismic DATA (RS18)

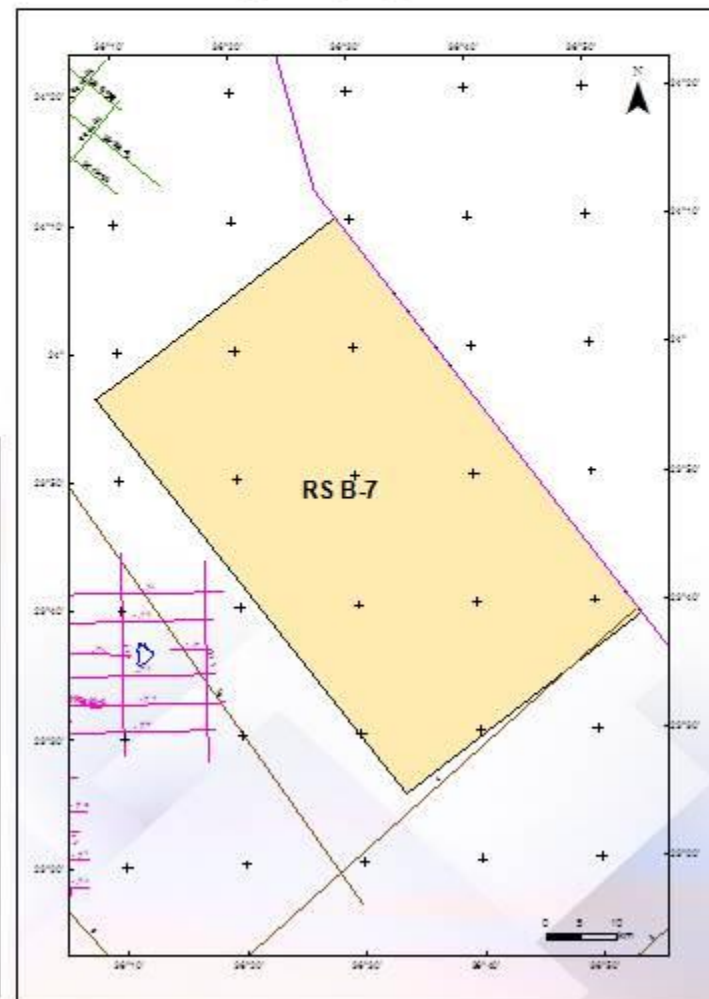


**Block 7**

**Available Data**



## Re-Processing Legacy 2D Seismic Lines

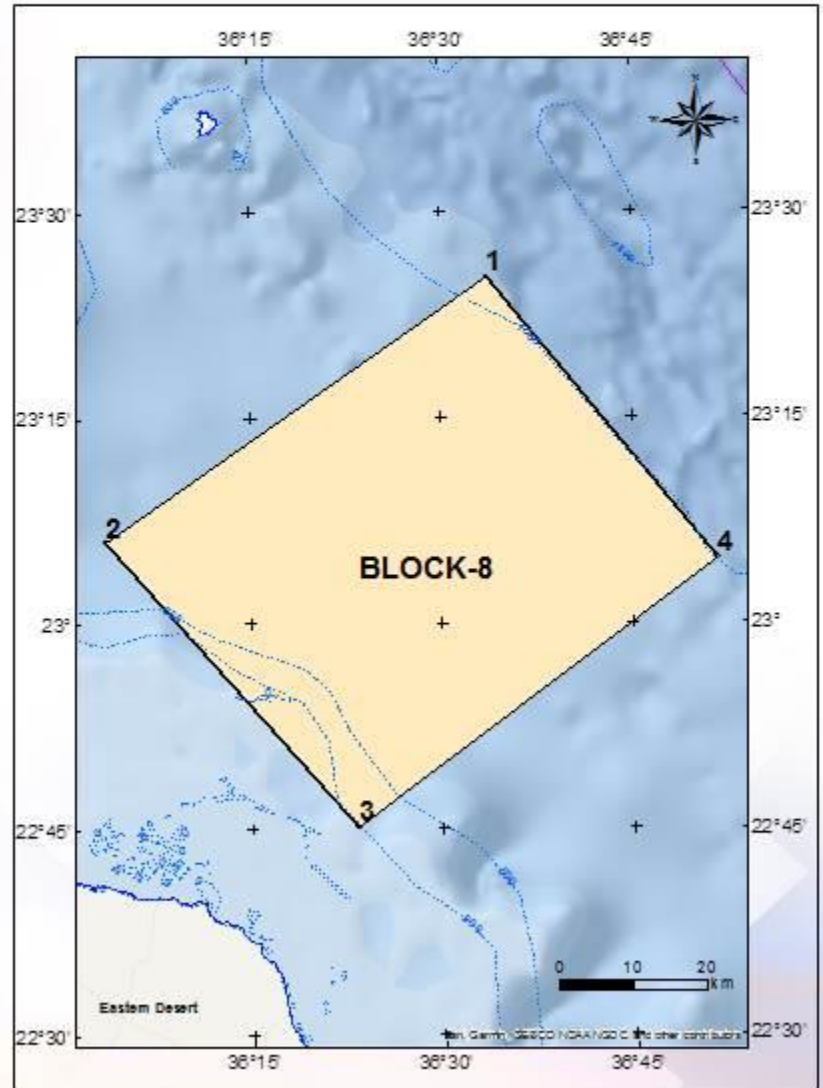




# Red Sea Block 8

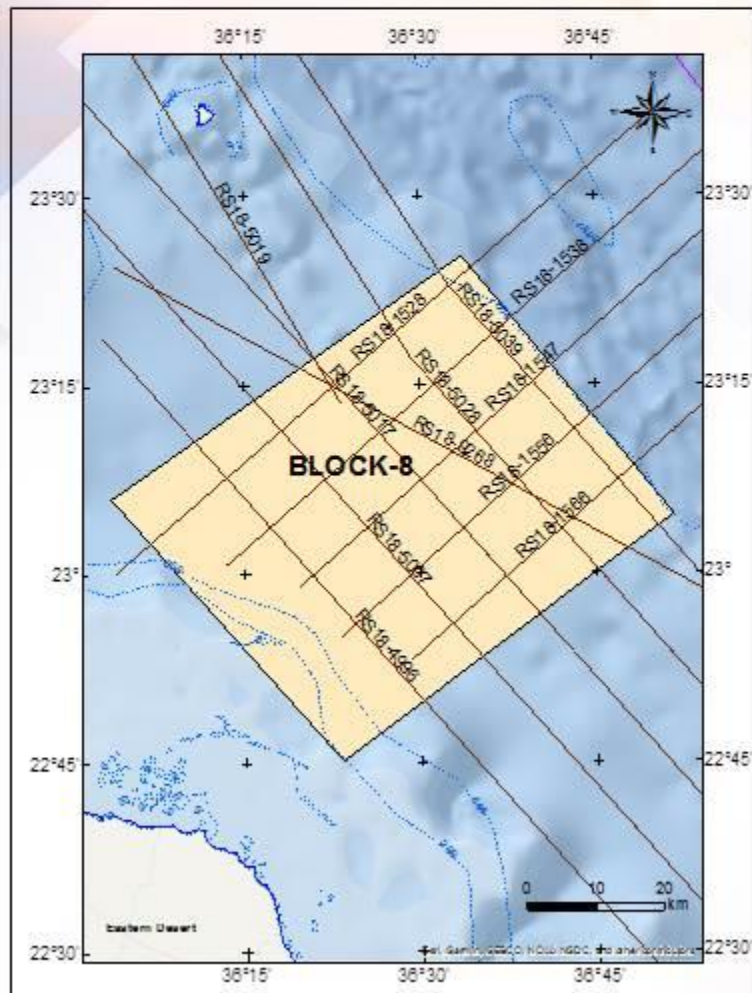
**Area=3060 km<sup>2</sup>**

Point	Latitude	Longitude
1	23° 25' 15.000" N	36° 33' 41.000" E
2	23° 06' 06.000" N	36° 03' 42.000" E
3	22° 45' 11.000" N	36° 23' 17.000" E
4	23° 04' 39.000" N	36° 51' 40.000" E



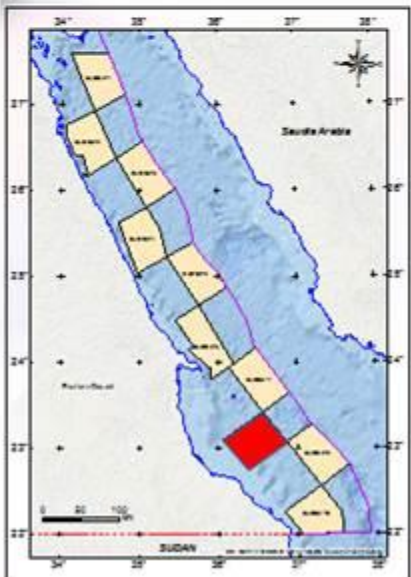
Projected Coordinate System:  
WGS 1984\_UTM Zone 36N

## New seismic DATA (RS18)

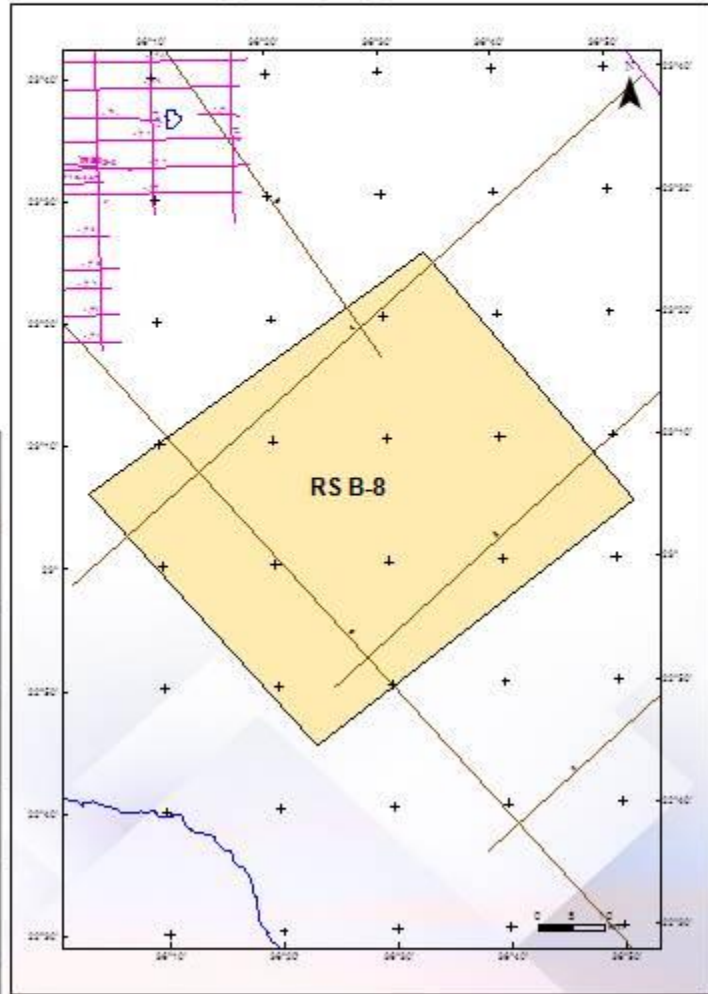


**Block 8**

**Available Data**



## Re-Processing Legacy 2D Seismic Lines



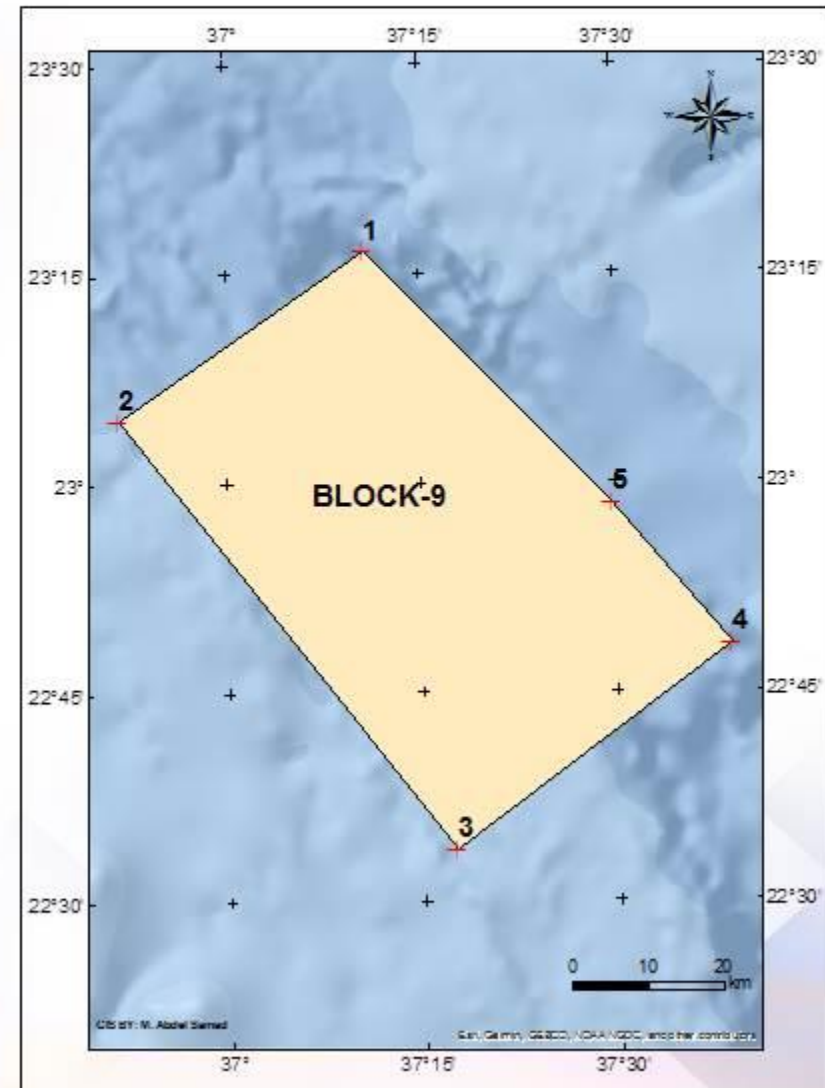


# Red Sea Block 9

**Area=3067 km<sup>2</sup>**

Point	Latitude	Longitude
1	23° 16' 30.000" N	37° 10' 52.000" E
2	23° 04' 39.000" N	36° 51' 40.000" E
3	22° 33' 46.000" N	37° 17' 28.000" E
4	22° 48' 21.000" N	37° 38' 53.000" E
5	22° 58' 30.000" N	37° 29' 44.000" E

Projected Coordinate System:  
WGS 1984\_UTM Zone 36N





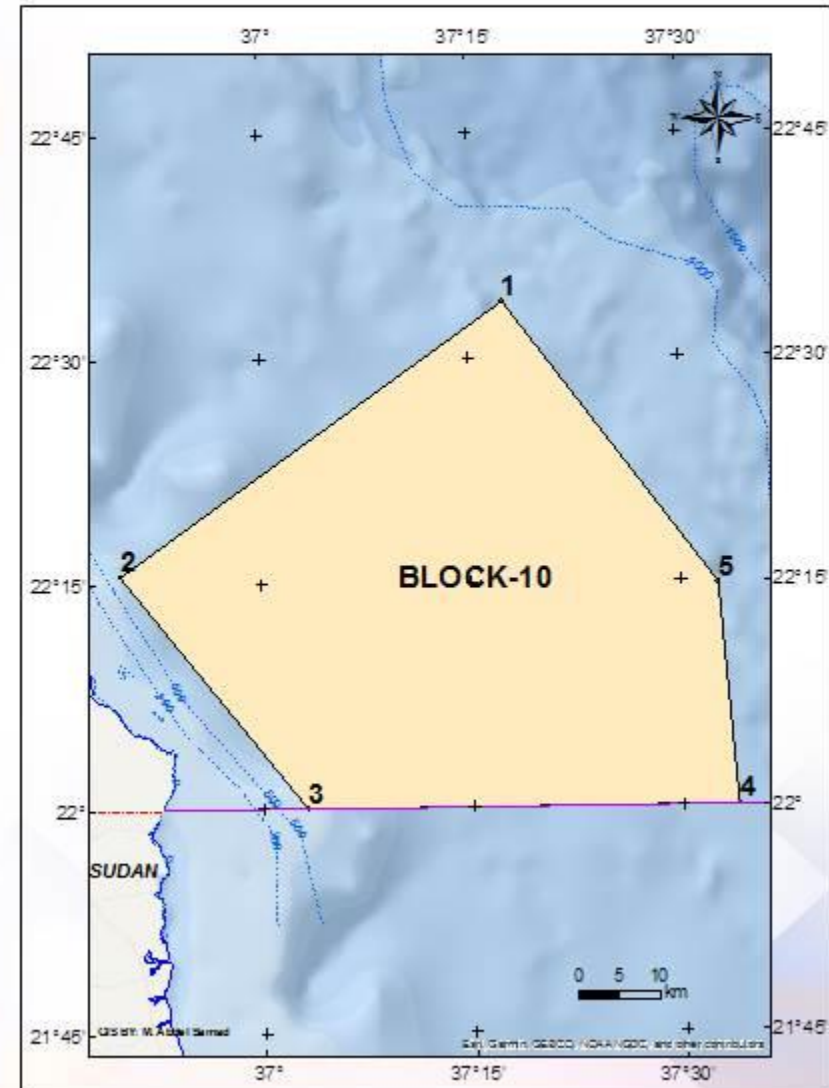


# Red Sea Block 10

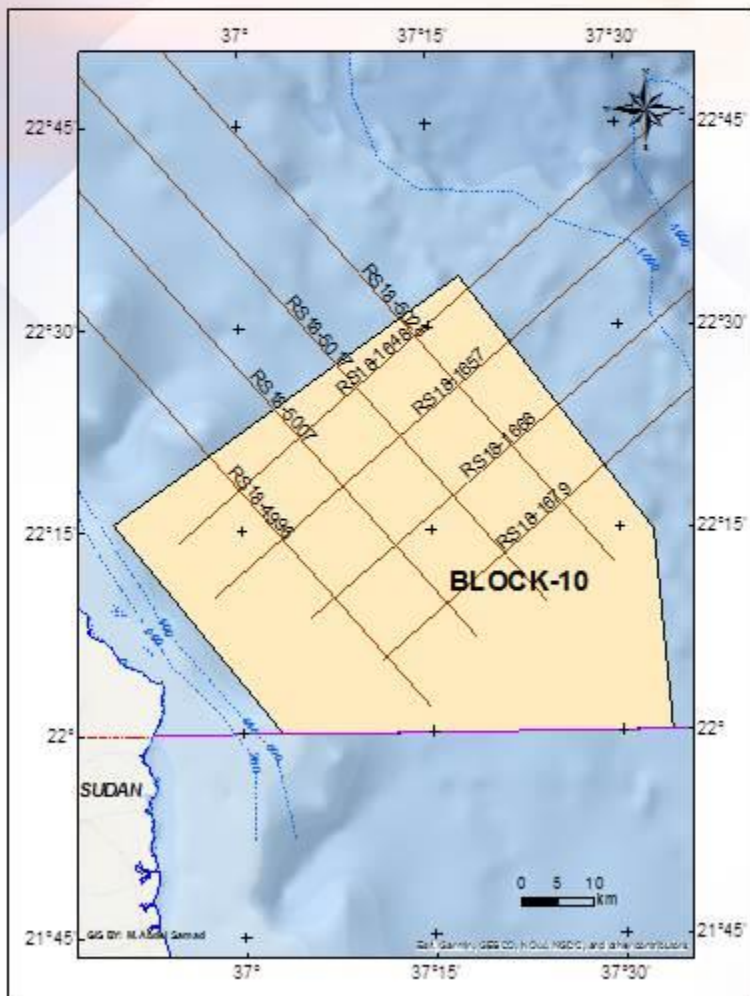
Area=3039 km<sup>2</sup>

Point	Latitude	Longitude
1	22° 33' 46.000" N	37° 17' 28.000" E
2	22° 15' 36.000" N	36° 49' 51.000" E
3	22° 00' 00.000" N	37° 03' 16.000" E
4	22° 00' 0.000" N	37° 33' 38.000" E
5	22° 14' 51.000" N	37° 32' 43.000" E

Projected Coordinate System:  
WGS 1984\_UTM Zone 36N



## New seismic DATA (RS18)



**Block 10**

**Available Data**



## Re-Processing Legacy 2D Seismic Lines

