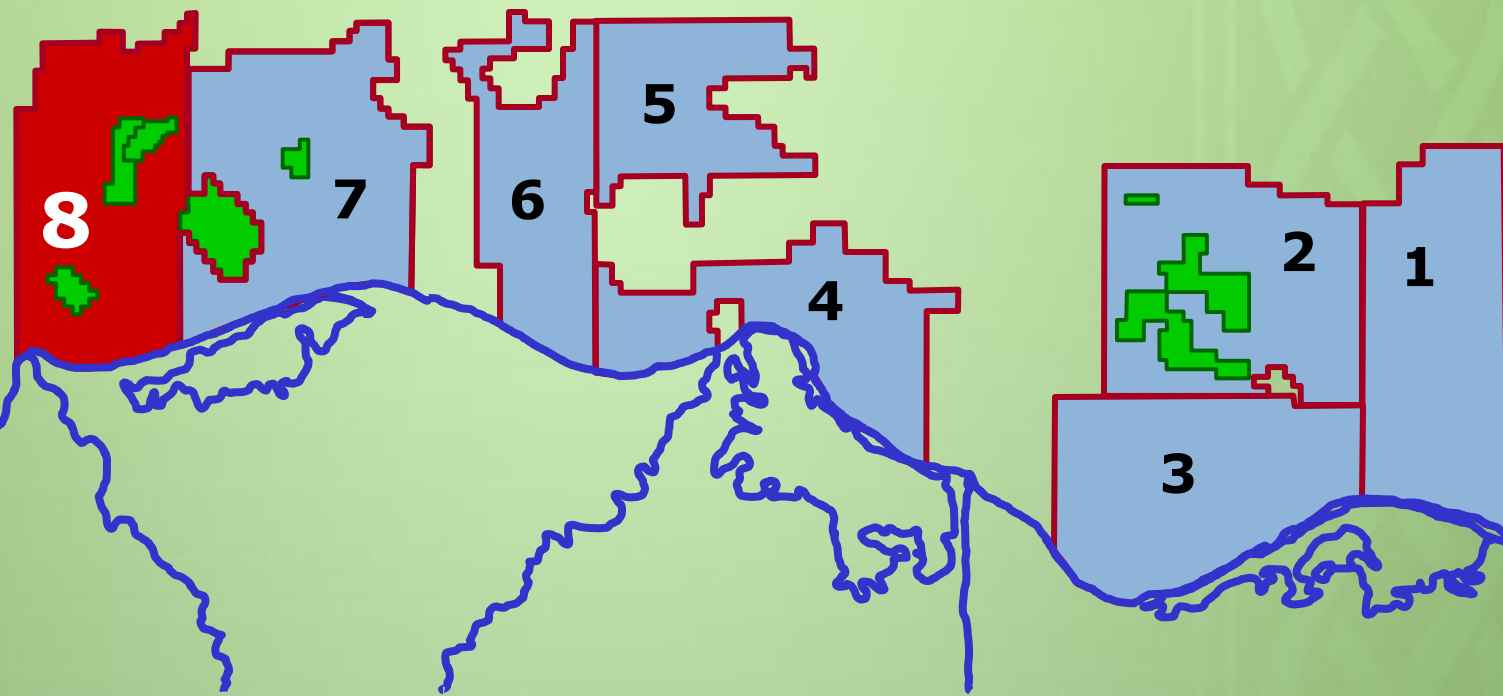




Block 8

East Alexandria Offshore



BID 2015



Block Summary

Location:

East Alexandria Offshore Block is located at approximately 81 km to the northeast of Alexandria City; directly to the northwest of Lake El Burullus. The Mediterranean shoreline forms the southern boundary of the block, while its northern boundary lies seaward at about 64 km in a maximum water depth of 400 m. East Alexandria Offshore Block is situated in an area with well-established infrastructure for gas-condensate production/transportation.

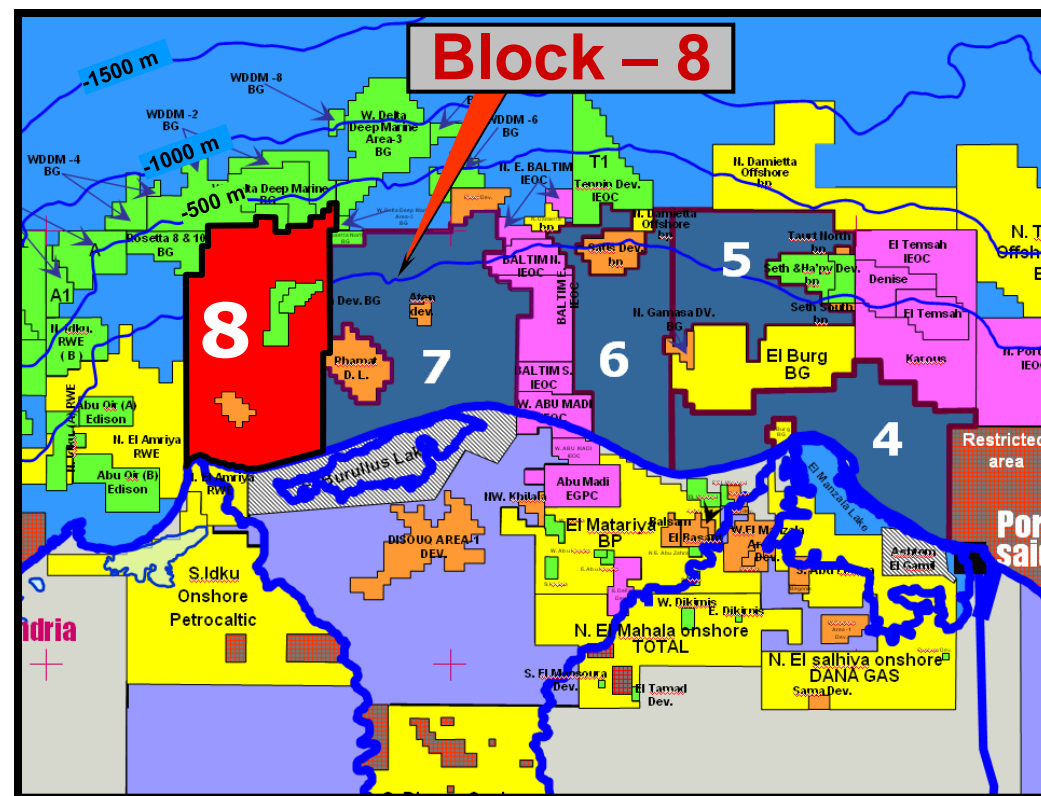
Total Area: 1749 Km²

Water Depth: 0 - 400 m

Previous Concessionaire: IEOC, BG

Nearby Fields & Discoveries:

East Alexandria Offshore Block is bordered from the west and north by the Rosetta Trend of gas-condensate fields (Pliocene & Miocene). Additionally, the block encompasses two established development leases (BG's Rosetta & Roseta West) as well as a development lease proposal by GDF (West El Burullus South).





EGAS



Ministry of Petroleum and Mineral Resources

Block Coordinates & Drilled Wells

Block 8: East Alexandria Offshore

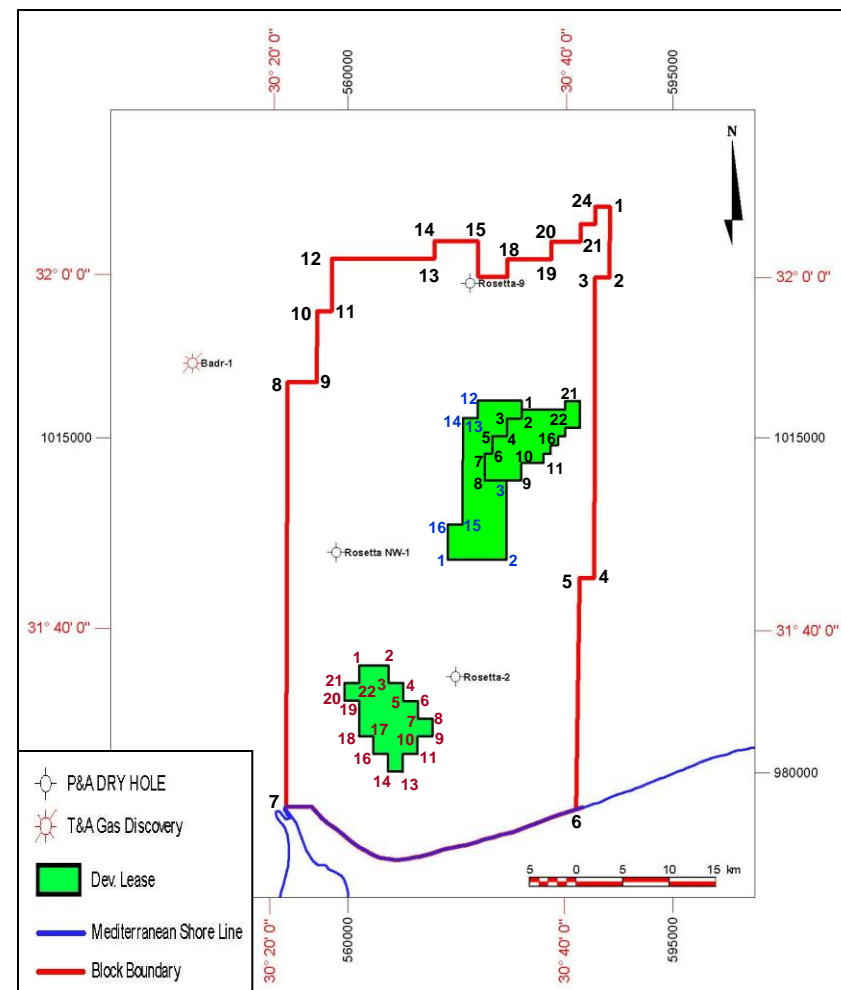
Block 8 East Alexandria Offshore

No.	Lat.	Long.
1	32° 04' 00"	30° 43' 00"
2	32° 00' 00"	30° 43' 00"
3	32° 00' 00"	30° 42' 00"
4	31° 43' 00"	30° 42' 00"
5	31° 43' 00"	30° 41' 00"
6	Intersection of Long. 30° 41' 00" with Shore Line	30° 41' 00"
7	Intersection of Long. 30° 21' 00" with Shore Line	30° 21' 00"
8	31° 54' 00"	30° 21' 00"
9	31° 54' 00"	30° 23' 00"
10	31° 58' 00"	30° 23' 00"
11	31° 58' 00"	30° 24' 00"
12	32° 01' 00"	30° 24' 00"
13	32° 01' 00"	30° 31' 00"
14	32° 02' 00"	30° 31' 00"
15	32° 02' 00"	30° 34' 00"
16	32° 00' 00"	30° 34' 00"
17	32° 00' 00"	30° 36' 00"
18	32° 01' 00"	30° 36' 00"
19	32° 01' 00"	30° 39' 00"
20	32° 02' 00"	30° 39' 00"
21	32° 02' 00"	30° 41' 00"
22	32° 03' 00"	30° 41' 00"
23	32° 03' 00"	30° 42' 00"
24	32° 04' 00"	30° 42' 00"

Rosetta Development Lease (BG)		
No.	Lat.	Long.
1	31° 52' 30"	30° 37' 00"
2	31° 52' 00"	30° 37' 00"
3	31° 52' 00"	30° 36' 00"
4	31° 51' 00"	30° 36' 00"
5	31° 51' 00"	30° 35' 00"
6	31° 50' 00"	30° 35' 00"
7	31° 50' 00"	30° 34' 30"
8	31° 48' 30"	30° 34' 30"
9	31° 48' 30"	30° 37' 00"
10	31° 49' 30"	30° 37' 00"
11	31° 49' 30"	30° 38' 30"
12	31° 50' 00"	30° 38' 30"
13	31° 50' 00"	30° 39' 00"
14	31° 50' 30"	30° 39' 00"
15	31° 50' 30"	30° 39' 30"
16	31° 51' 00"	30° 39' 30"
17	31° 51' 00"	30° 40' 00"
18	31° 51' 30"	30° 40' 00"
19	31° 51' 30"	30° 41' 00"
20	31° 53' 00"	30° 41' 00"
21	31° 53' 00"	30° 40' 00"
22	31° 52' 30"	30° 40' 00"

WEB SOUTH DEVELOPMENT LEASE		
No.	Lat.	Long.
1	31° 38' 00"	30° 26' 00"
2	31° 38' 00"	30° 28' 00"
3	31° 37' 00"	30° 28' 00"
4	31° 37' 00"	30° 29' 00"
5	31° 36' 00"	30° 29' 00"
6	31° 36' 00"	30° 30' 00"
7	31° 35' 00"	30° 30' 00"
8	31° 35' 00"	30° 31' 00"
9	31° 34' 00"	30° 31' 00"
10	31° 34' 00"	30° 30' 00"
11	31° 33' 00"	30° 30' 00"
12	31° 33' 00"	30° 29' 00"
13	31° 32' 00"	30° 29' 00"
14	31° 32' 00"	30° 28' 00"
15	31° 33' 00"	30° 28' 00"
16	31° 33' 00"	30° 27' 00"
17	31° 34' 00"	30° 27' 00"
18	31° 34' 00"	30° 26' 00"
19	31° 36' 00"	30° 26' 00"
20	31° 36' 00"	30° 25' 00"
21	31° 37' 00"	30° 25' 00"
22	31° 37' 00"	30° 26' 00"

Rosetta West Development Lease (BG)		
No.	Lat.	Long.
1	31° 44' 00"	30° 32' 00"
2	31° 44' 00"	30° 36' 00"
3	31° 48' 30"	30° 36' 00"
4	31° 48' 30"	30° 34' 30"
5	31° 50' 00"	30° 34' 30"
6	31° 50' 00"	30° 35' 00"
7	31° 51' 00"	30° 35' 00"
8	31° 51' 00"	30° 36' 00"
9	31° 52' 00"	30° 36' 00"
10	31° 52' 00"	30° 37' 00"
11	31° 53' 00"	30° 37' 00"
12	31° 53' 00"	30° 34' 00"
13	31° 52' 00"	30° 34' 00"
14	31° 52' 00"	30° 33' 00"
15	31° 46' 00"	30° 33' 00"
16	31° 46' 00"	30° 32' 00"



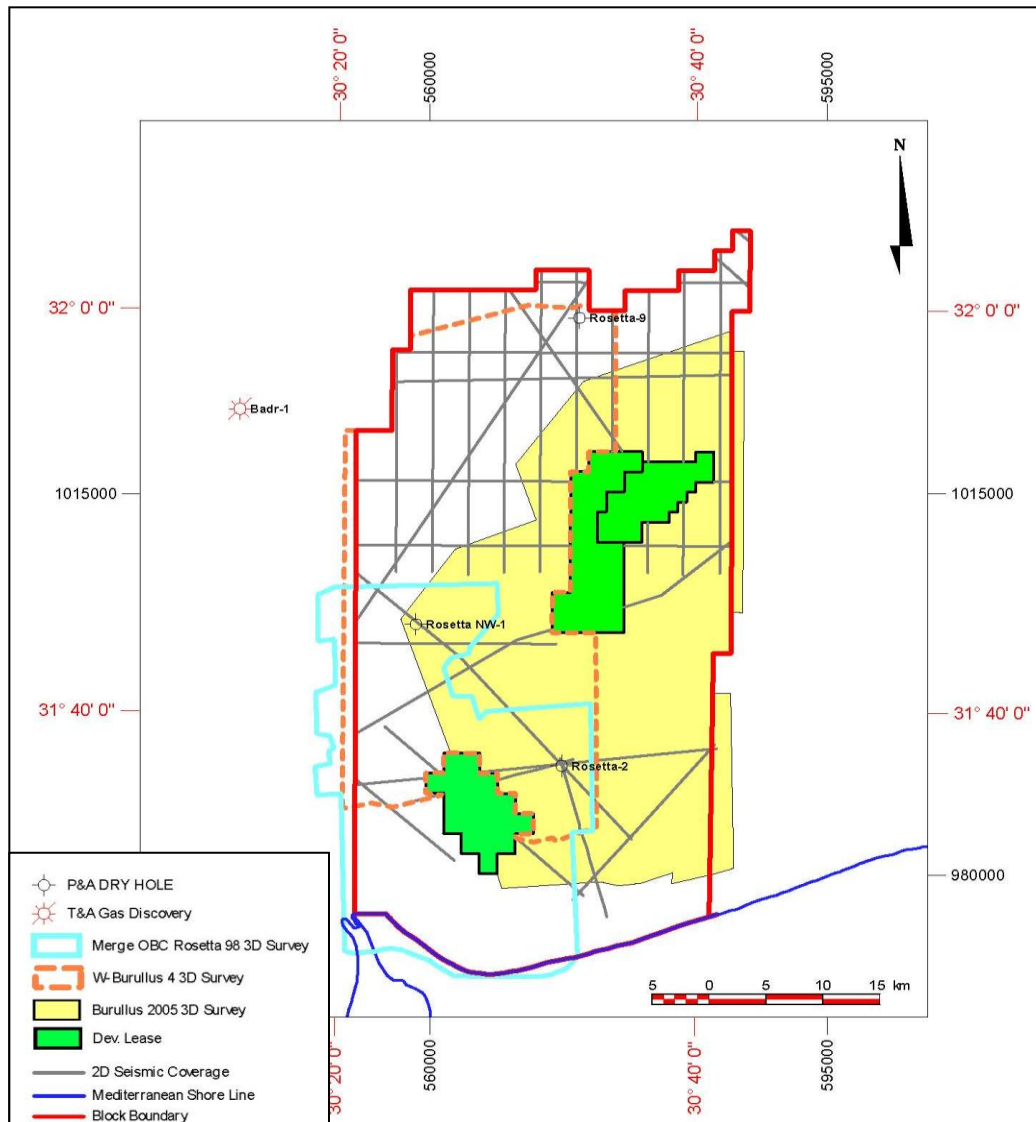
Well Name/Company	Spud Date/Compl. Date	TD/FM. @ TD	Lat./Long	Status
Rosetta-2	4-May-69	3518 M	31° 37' 22.650"	P&A Dry Hole
IEOC	26-Jul-69	M. Miocene	30° 22' 34.180"	
NW Rosetta -1	10-May-85	4418 M	31° 44' 22.630"	P&A Dry Hole
IEOC	19-Jul-85	Qantara	30° 24' 24.466"	
Rosetta-9	4-May-01	2800 M	31° 59' 37.798"	P&A Dry Hole
Rashpetco	25-May-01	K. El Sheikh (Pliocene)	30° 33' 27.607"	



2D & 3D Seismic Coverage

2D Seismic Surveys (Segy Standard Format)		
Survey Name	Line-Km	No. of Seismic Lines
EGP	467	13
GND93	34	2
SW	14	1
WDN	10	1
BP_ND1&5	242	8
Total	767	25

3D Seismic Data (Segy Standard Format)	
Survey Name	Area (Sq. Km)
Burullus 2005	937
W.Burullus 4	924
Merge OBC Rosetta98	607





Block – 8 Prospectivity Examples

East Alexandria Offshore Block is mainly located in the southeastern part of the Western Nile Delta Offshore area, with minor portion (its southeastern part) lying in the southwestern part of the Central Nile Delta Offshore area. The block straddles the NE-SW Qattara-Eratosthenes (Rosetta) Fault which hosts along its strike, to the west, numerous gas-condensate fields with mainly Pliocene sandstone reservoirs as well as sandstone reservoirs in the Miocene. Also, the block lies at approximately 25 km to the northeast of the Miocene Abu Qir gas-condensate field.

In addition to its location in the above mentioned setting, East Alexandria Offshore Block encompasses three development leases; the BG's Rosetta & Roseta West development leases (in its eastern part) and the GDF's (proposal) of West El Burullus South Development Lease in the southwestern part.

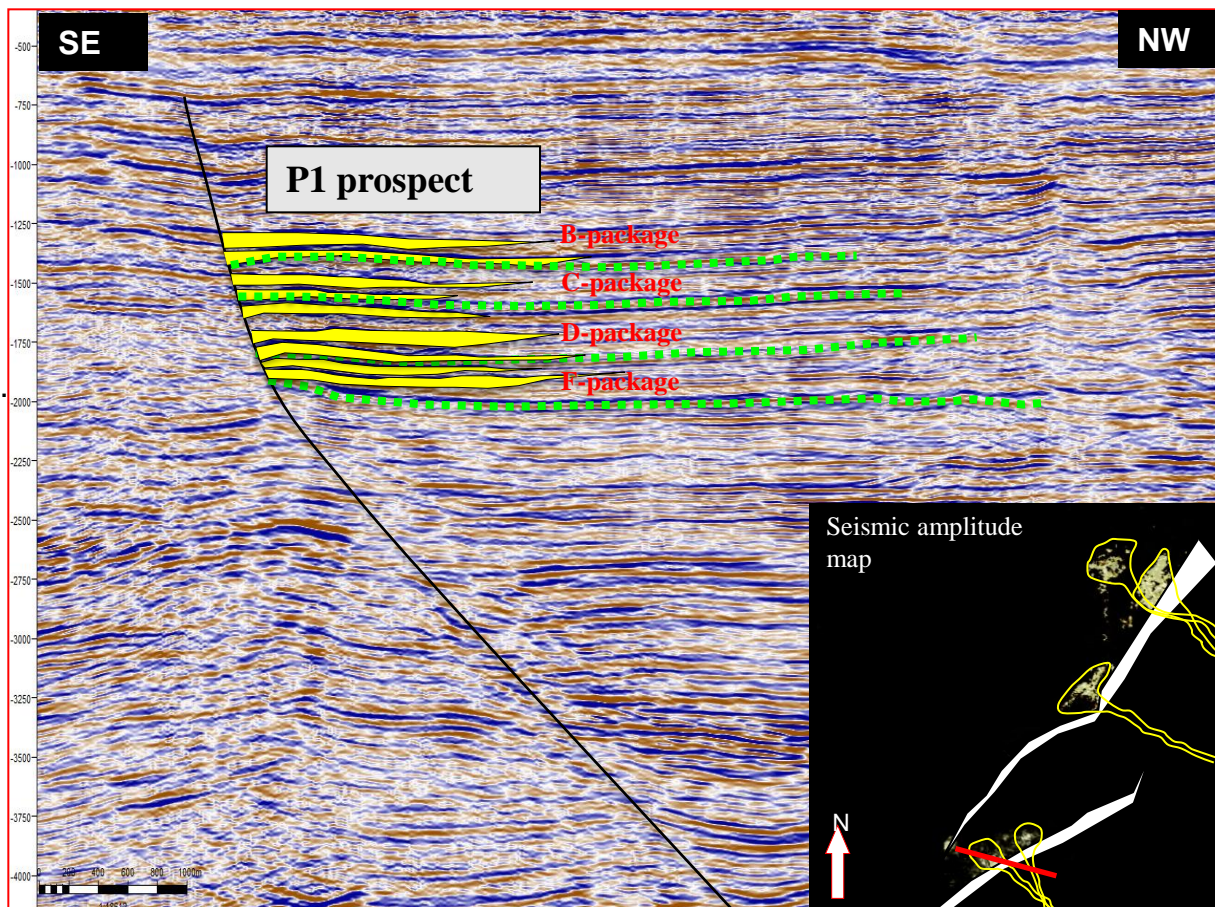
Pliocene Play Concept:

Source: Massive shales of Kafr El Sheikh.

Reservoir: Mainly represented by massive to laminated sands, lying up dip within a growth faulted block of Kafr El Sheikh Fm.

Seal: Intra-formational shales of the Kafr El Sheikh are anticipated to provide the top and lateral seal.

Trapping: The combined channel fill stratigraphic features and roll over anticline structures created and associated by listric growth.





Miocene Play Concept:

Source: Oligocene and early Miocene shales..

Reservoir: Mainly represented by massive to laminated sands of slope channel.

Seal: Intra-formational shales of the Late Miocene are anticipated to provide the top and lateral seal.

Trapping: Stratigraphic/structural combination trap.

